

Date: 29/4/22 **Author:** Jessica Lemos Lic. TCT1002557 **Project:** MELROSE CRANES

Comments:

FULL ROAD CLOSURE - MOBILE CRANE ON ROAD

Trucks will enter via KING STREET INTO THE WORK AREA

Trucks will exit Elizabeth Street from the East

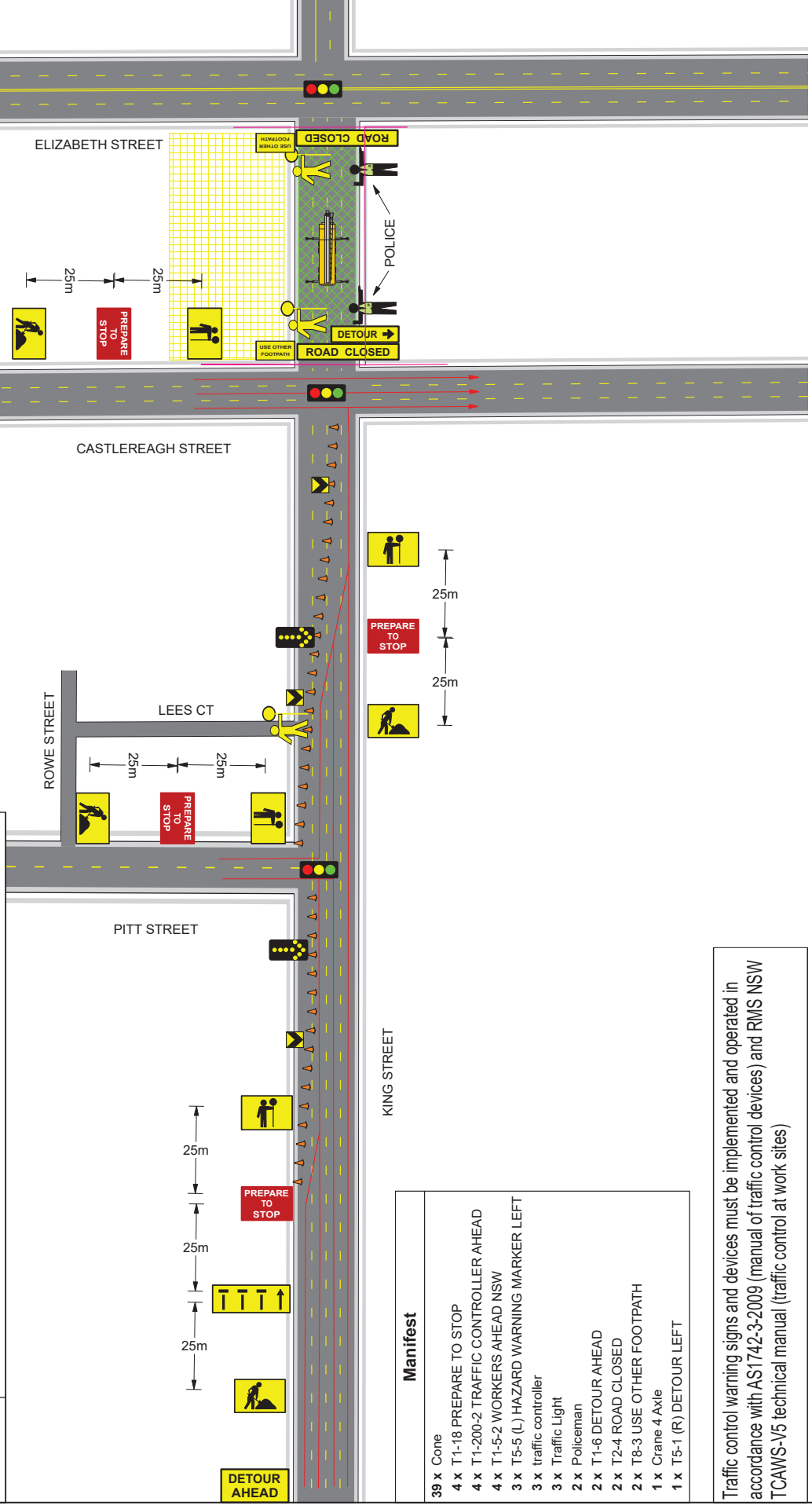
12 hour closure - Weekend

TWO WAY radios will be used to communicate between traffic staff and crane crew

2 Police Officers onsite



Legend	
	Cone
	Work Area
	Work Site



Manifest	
39 x	Cone
4 x	T1-18 PREPARE TO STOP
4 x	T1-200-2 TRAFFIC CONTROLLER AHEAD
4 x	T1-5-2 WORKERS AHEAD NSW
3 x	T5-5 (L) HAZARD WARNING MARKER LEFT
3 x	traffic controller
3 x	Traffic Light
2 x	Policeman
2 x	T1-6 DETOUR AHEAD
2 x	T2-4 ROAD CLOSED
2 x	T8-3 USE OTHER FOOTPATH
1 x	Crane 4 Axle
1 x	T5-1 (R) DETOUR LEFT

Traffic control warning signs and devices must be implemented and operated in accordance with AS1742-3:2009 (manual of traffic control devices) and RMS NSW TCAWS-V5 technical manual (traffic control at work sites)

Date: 29/4/22 Author: Jessica Lemos Lic. TCT1002557 Project: MELROSE CRANES

Comments:

FULL ROAD CLOSURE - MOBILE CRANE ON ROAD

Trucks will enter via KING STREET INTO THE WORK AREA

Trucks will exit Elizabeth Street from the East

12 hour closure - Weekend

TWO WAY radios will be used to communicate between traffic staff and crane crew

2 Police Officers onsite



JARRAH GROUP

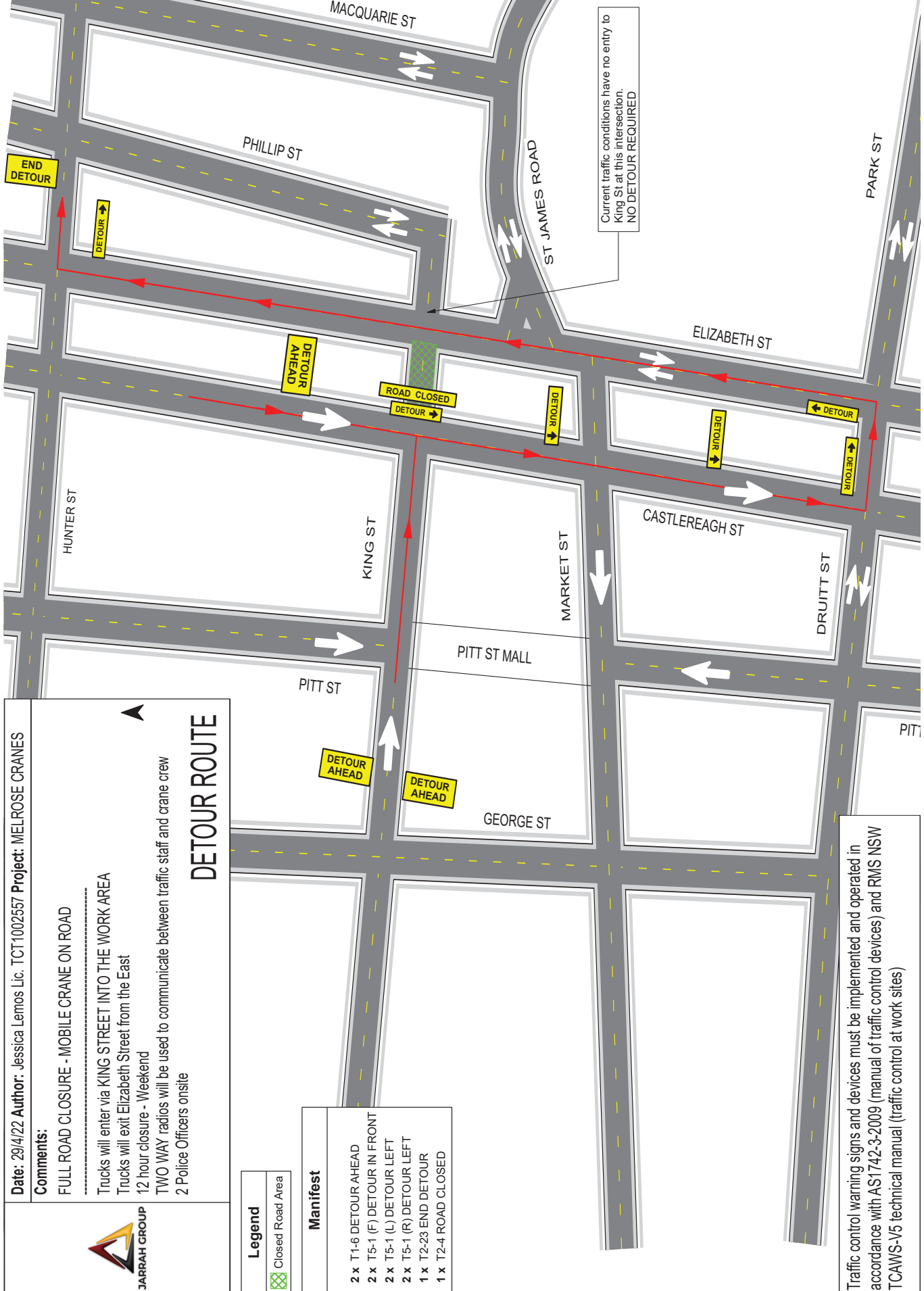
DETOUR ROUTE

Legend

Closed Road Area

Manifest

- 2 x T1-6 DETOUR AHEAD
- 2 x T5-1 (F) DETOUR IN FRONT
- 2 x T5-1 (L) DETOUR LEFT
- 2 x T5-1 (R) DETOUR LEFT
- 1 x T2-23 END DETOUR
- 1 x T2-4 ROAD CLOSED



Traffic control warning signs and devices must be implemented and operated in accordance with AS1742-3:2009 (manual of traffic control devices) and RMS NSW TCAWS-V5 technical manual (traffic control at work sites)