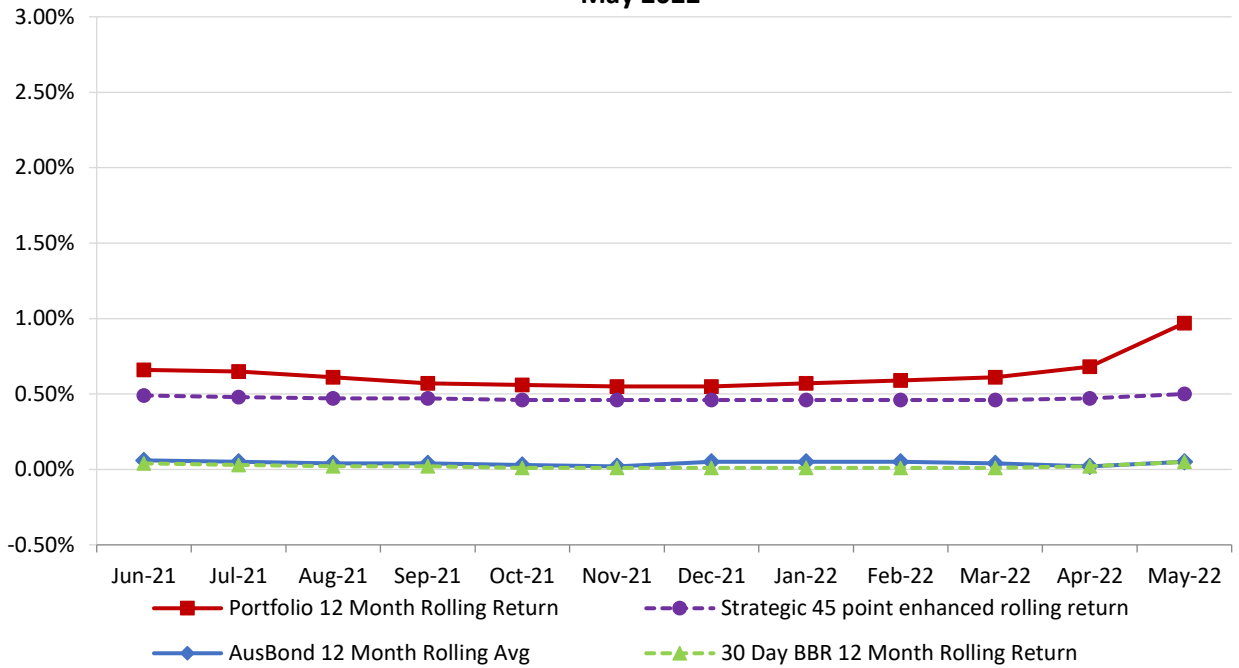


# **Attachment B**

**Investment Performance  
as at 31 May 2022**

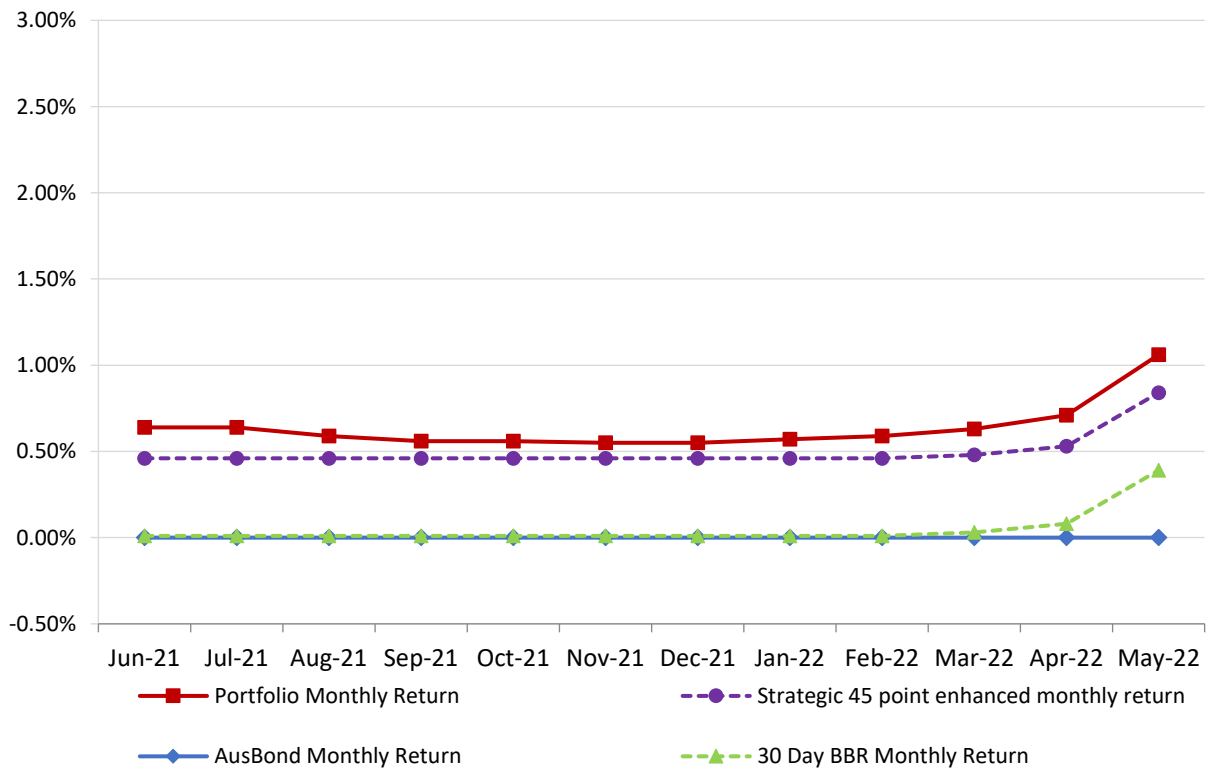
## 12 Month Rolling Averages

**Actual Portfolio vs Strategic Enhanced Benchmark vs AusBond Benchmark vs 30 Day BBR Benchmark  
May 2022**

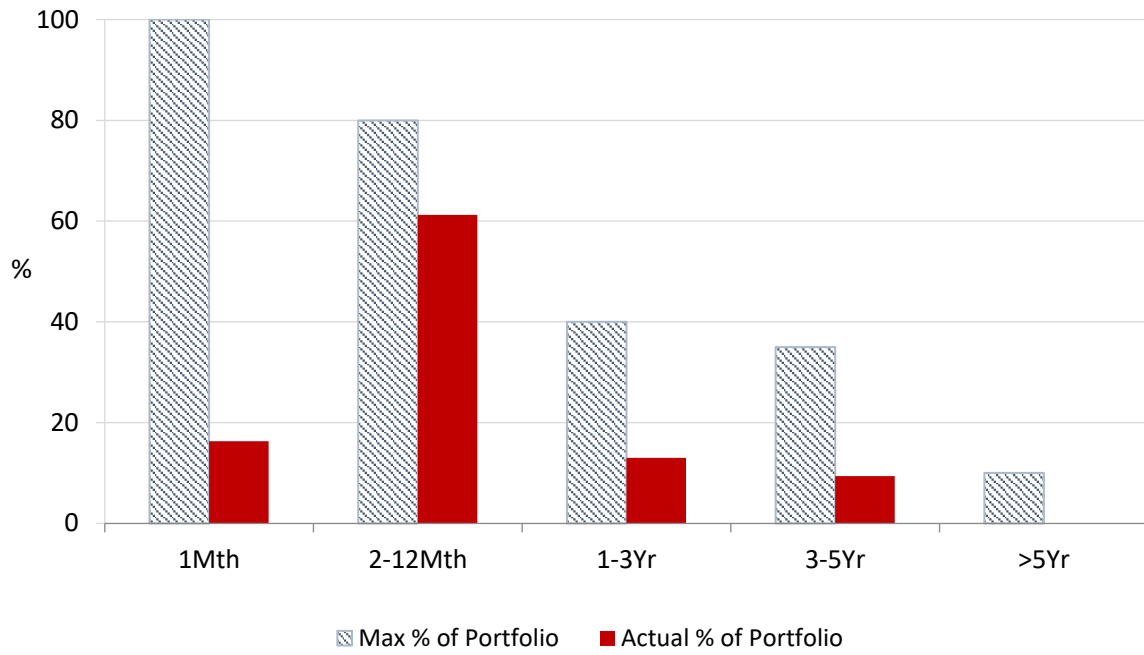


## Monthly Results

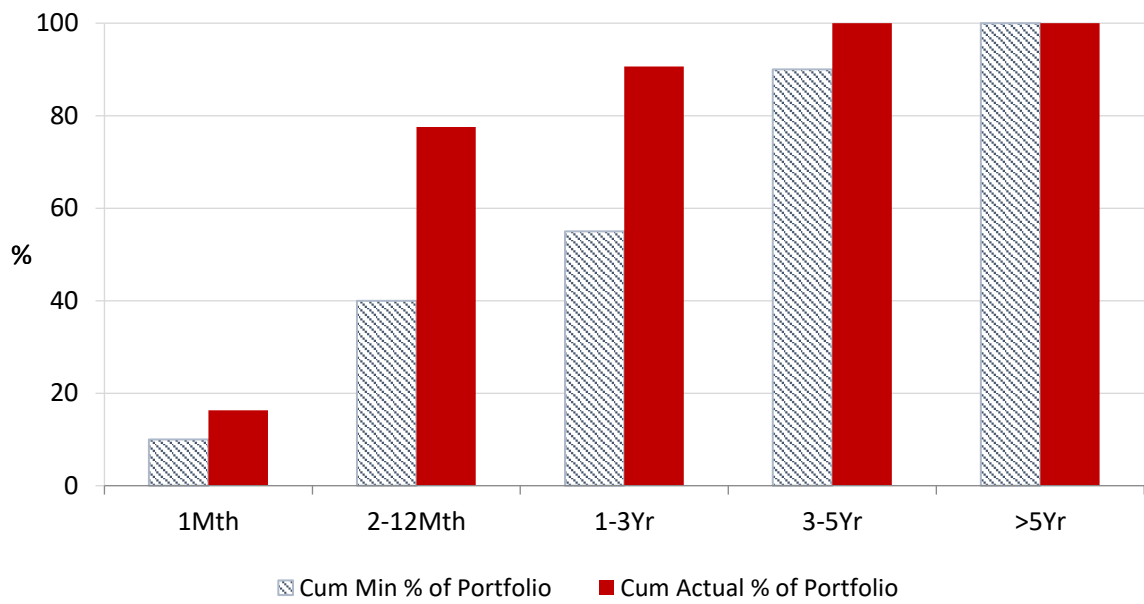
**Actual Portfolio vs Strategic Enhanced Benchmark vs AusBond Benchmark vs 30 Day BBR Benchmark  
May 2022**



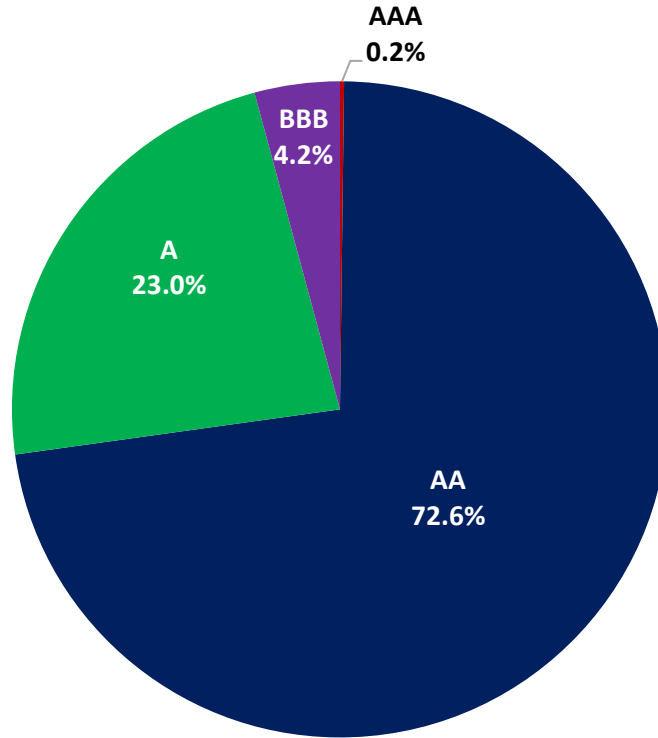
**Portfolio Liquidity - Maximum Allowances as at 31 May 2022**



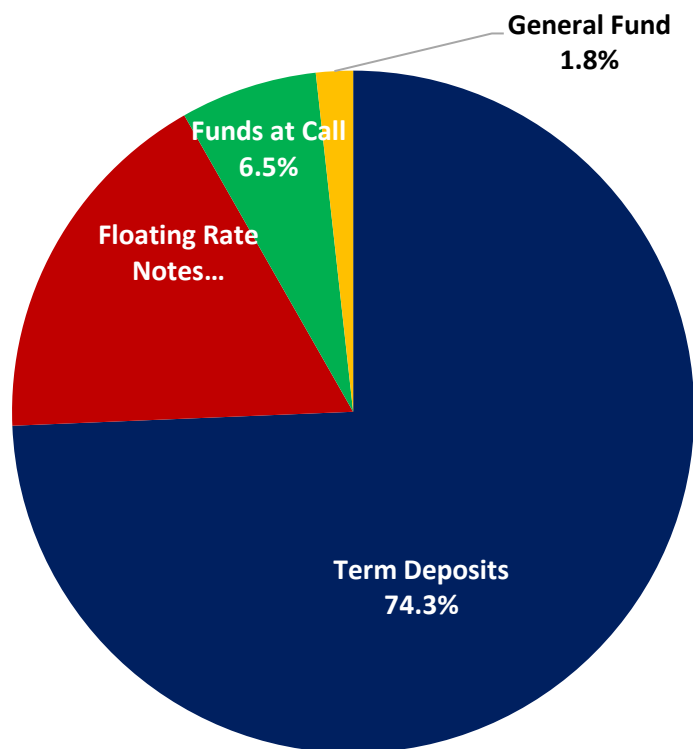
**Portfolio Liquidity - Minimum Allocations as at 31 May 2022**



**Risk Profile as at 31 May 2022**



**Risk Profile as at 31 May 2022**

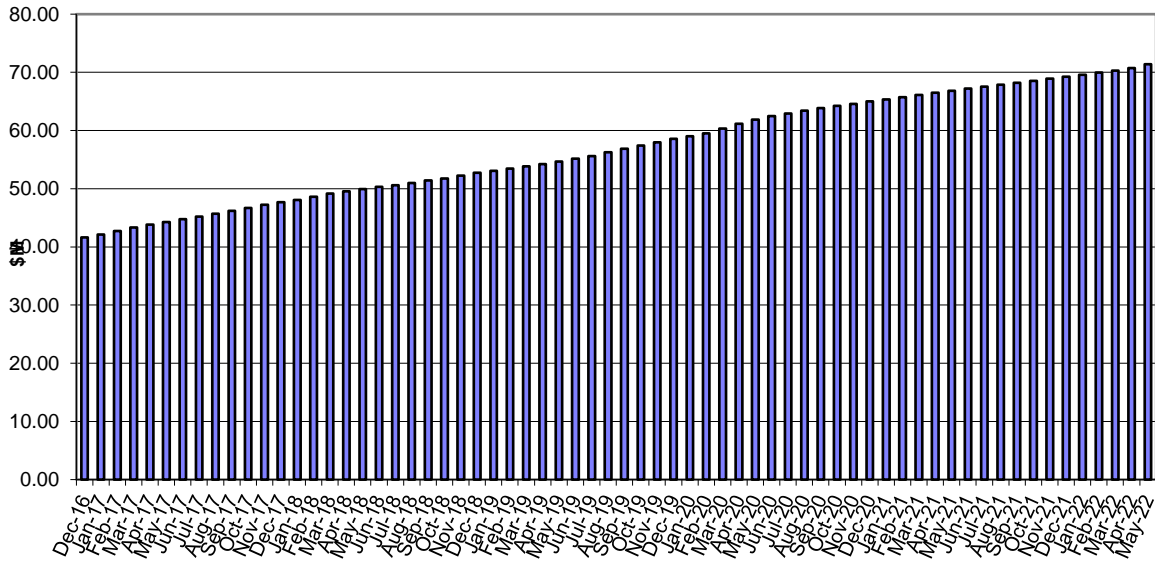


**INVESTMENT AND CASH DISTRIBUTION BY FINANCIAL INSTITUTION**

**as at 31 May 2022**

Institution Category	Financial Institution	Amount \$M	Financial Inst. %	Institution Cat. %
Australian Big 4 Bank (and related institutions)	ANZ Bank	53.0	7.1	
	Commonwealth Bank	160.0	21.5	
	National Aust Bank	74.7	10.1	
	Westpac Banking Corporation	224.9	30.3	
<b>Big 4 Total</b>		<b>512.6</b>		<b>69.0</b>
Other Australian ADIs and Australian subsidiaries of foreign institutions	Bank Australia Limited	10.0	1.3	
	Bank of Queensland	62.0	8.4	
	Bendigo & Adelaide Bank	65.0	8.8	
	Great Southern Bank (formerly Credit Union Australia)	2.8	0.4	
	ING Bank	10.0	1.3	
	ME Bank	8.0	1.1	
	Suncorp Bank	32.9	4.4	
	Macquarie Bank Ltd	27.0	3.6	
	Northern Territory Treasury Corporation	5.0	0.7	
Newcastle Permanent Building Society	7.3	1.0		
<b>Other ADI Total</b>		<b>229.9</b>		<b>31.0</b>
<b>Grand Total</b>		<b>742.5</b>	<b>100.0</b>	<b>100.0</b>

### Cumulative Outperformance over AusBond Benchmark - 2016-2022



### Cumulative Outperformance over 30 Day BBR Benchmark - 2016-2022

