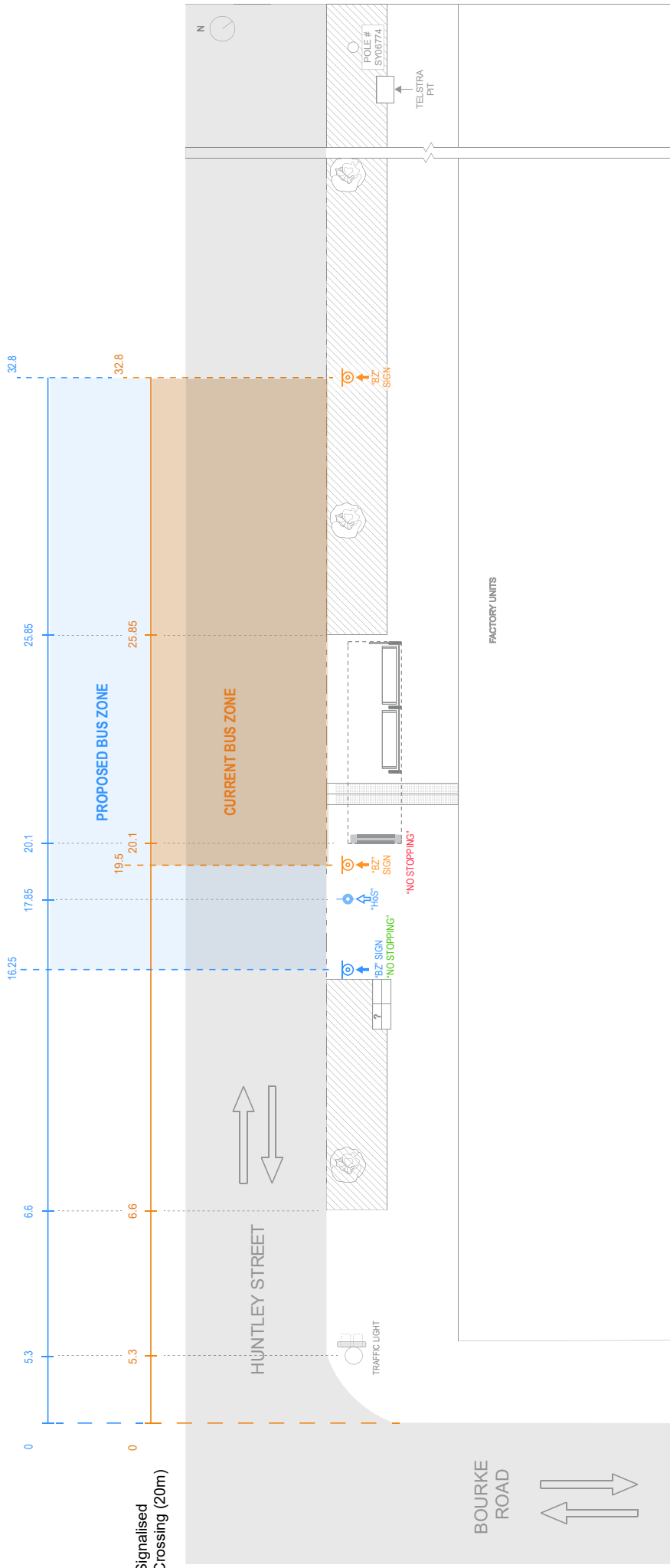


Location: Botany Road Before Henderson Road, Waterloo
Transit Stop Number (TSN): 201529
Shelter Identification: B3177

Please Note: Drawings are for illustrative purposes only and may not be to scale.

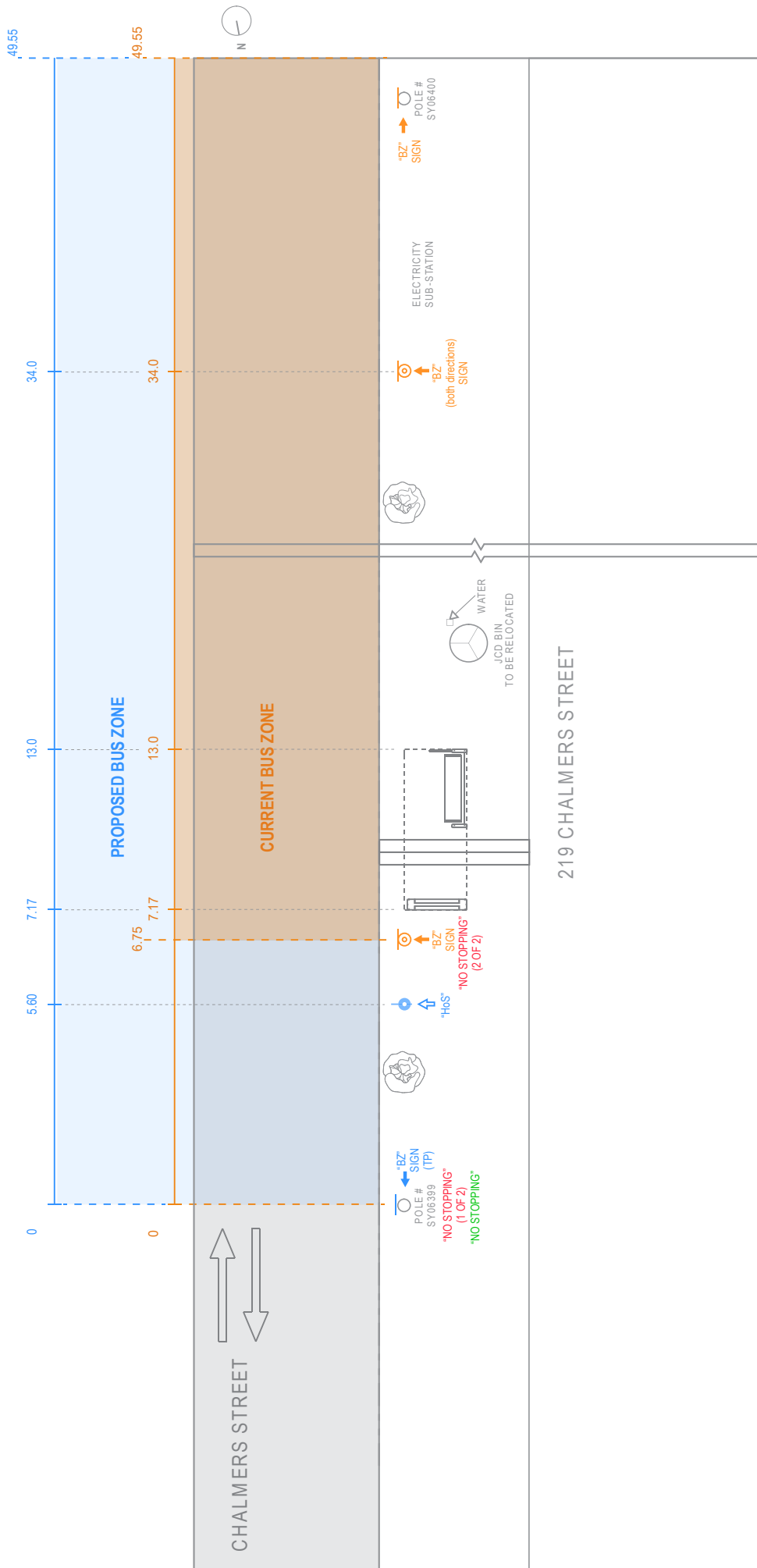
- "BZ" SIGN: Current location of Bus Zone (BZ) sign.
- "BZ" SIGN: Proposed relocation of Bus Zone (BZ) sign.
- "BZ" SIGN (TP): Current location of Bus Zone (BZ) on an existing telegraph pole.
- "BZ" SIGN (TP): Proposed relocation of Bus Zone (BZ) to an existing telegraph pole.
- "H&S": Head of Stand (H&S) in the form of a Transport for NSW B-Pole sign. Demarcates the H&S to bus operators + provides passengers with timetable information.
- "NO STOPPING" SIGN: Current location of No Stopping Zone.
- "NO STOPPING" SIGN: Proposed location of No Stopping Zone.



- "BZ" SIGN: Current location of Bus Zone (BZ) sign.
- "BZ" SIGN: Proposed relocation of Bus Zone (BZ) sign.
- "BZ" SIGN (TP): Current location of Bus Zone (BZ) on an existing telegraph pole.
- "BZ" SIGN (TP): Proposed relocation of Bus Zone (BZ) to an existing telegraph pole.
- "HOS": Head of Stand (HOS) in the form of a Transport for NSW B-Pole sign. Demarcates the HOS to bus operators + provides passengers with timetable information.
- "NO STOPPING" SIGN: Current location of No Stopping Zone.
- "NO STOPPING" SIGN: Proposed location of No Stopping Zone.

Location: Huntley Street at Bourke Road, Alexandria
Transit Stop Number (TSN): 201540
Shelter Identification: B3252

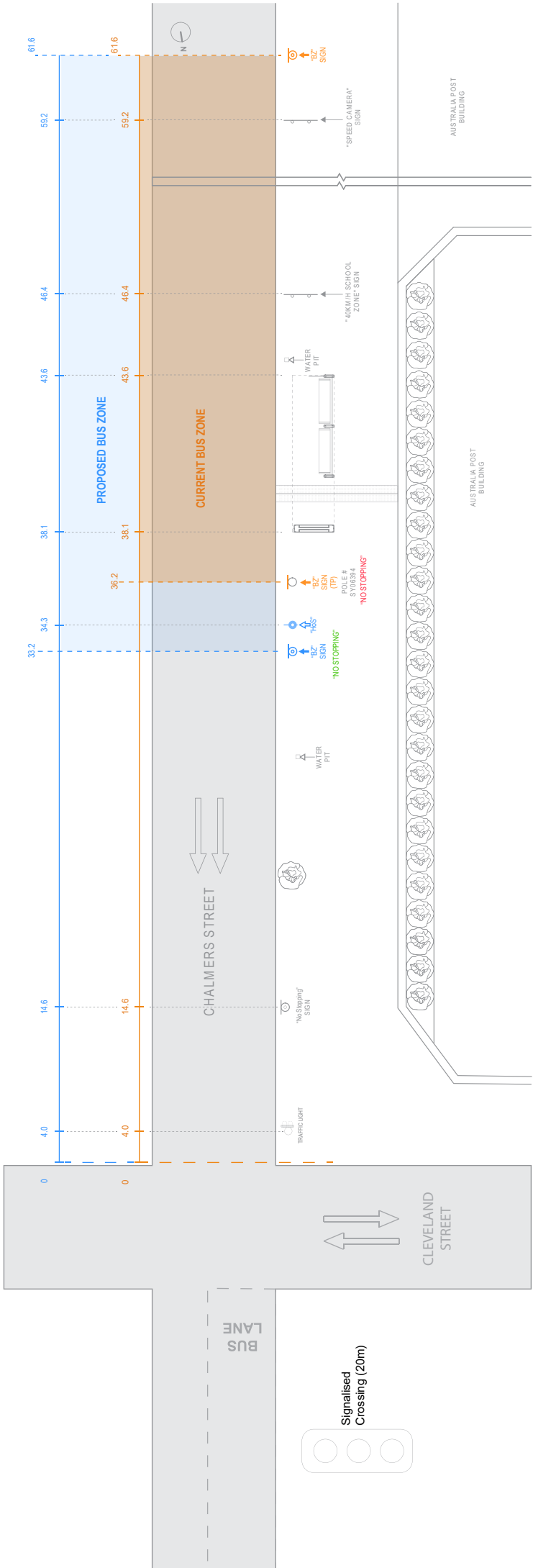
Please Note: Drawings are for illustrative purposes only and may not be to scale.



- "BZ" SIGN: Current location of Bus Zone (BZ) sign.
- "BZ" SIGN (TP): Proposed relocation of Bus Zone (BZ) sign.
- "BZ" SIGN (TP): Current location of Bus Zone (BZ) on an existing telegraph pole.
- "BZ" SIGN (TP): Proposed relocation of Bus Zone (BZ) to an existing telegraph pole.
- "HOS": Head of Stand (HoS) in the form of a Transport for NSW B-Pole sign. Demarcates the HoS to bus operators + provides passengers with timetable information.
- "NO STOPPING" SIGN: Current location of No Stopping Zone.
- "NO STOPPING" SIGN: Proposed location of No Stopping Zone.

Location: Chalmers Street after Wells Street, Redfern
Transit Stop Number (TSN): 201615
Shelter Identification: B3222

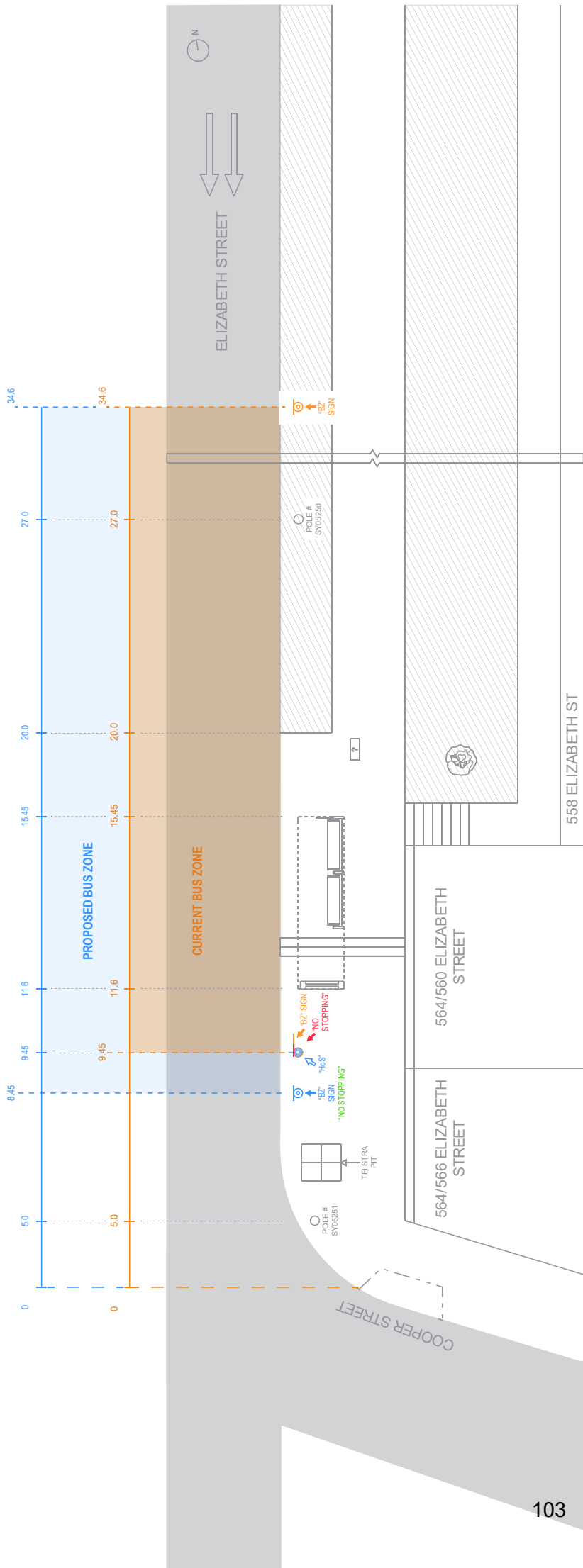
Please Note: Drawings are for illustrative purposes only and may not be to scale.



- BZ SIGN:** Current location of Bus Zone (BZ) sign
- BZ SIGN (TP):** Proposed relocation of Bus Zone (BZ) sign
- BZ SIGN (TP):** Current location of Bus Zone (BZ) on an existing signpost pole
- BZ SIGN (TP):** Proposed relocation of Bus Zone (BZ) to an existing signpost pole
- HoS:** Head of Stand (HoS) in the form of a Transport for NSW B-Pole sign. Demarcates the HoS to bus operators + provides passengers with timetable information.
- NO STOPPING SIGN:** Current location of No Stopping Zone
- NO STOPPING SIGN:** Proposed location of No Stopping Zone

Location: Chalmers Street before Cleveland Street, Strawberry Hills
Transit Stop Number (TSN): 201616
Shelter Identification: B3172

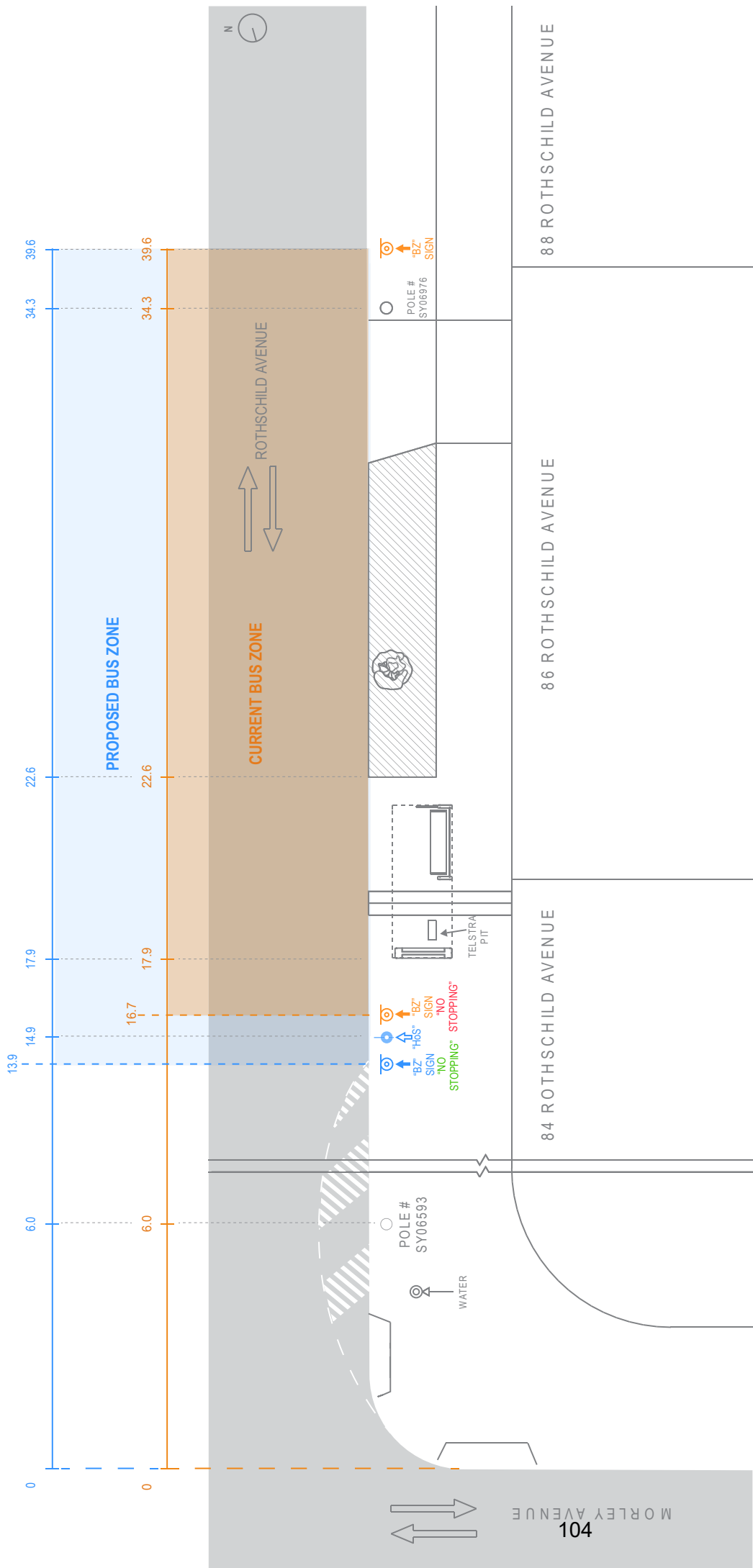
Please Note: Drawings are for illustrative purposes only and may not be to scale.



- "BZ" SIGN: Current location of Bus Zone (BZ) sign.
- "BZ" SIGN (TP): Proposed relocation of Bus Zone (BZ) sign.
- "BZ" SIGN (TP): Current location of Bus Zone (BZ) on an existing telegraph pole.
- "HOS" SIGN (TP): Proposed relocation of Bus Zone (BZ) to an existing telegraph pole.
- "HOS" SIGN: Head of Stair (HOS) in the form of a Transport for NSW B-Pole sign. Demarcates the HOS to bus operators + provides passengers with timetable information.
- "NO STOPPING" SIGN: Current location of No Stopping Zone.
- "NO STOPPING" SIGN: Proposed location of No Stopping Zone.

Location: Elizabeth Street Before Cooper Street, Surry Hills
Transit Stop Number (TSN): 201617
Shelter Identification: B3174

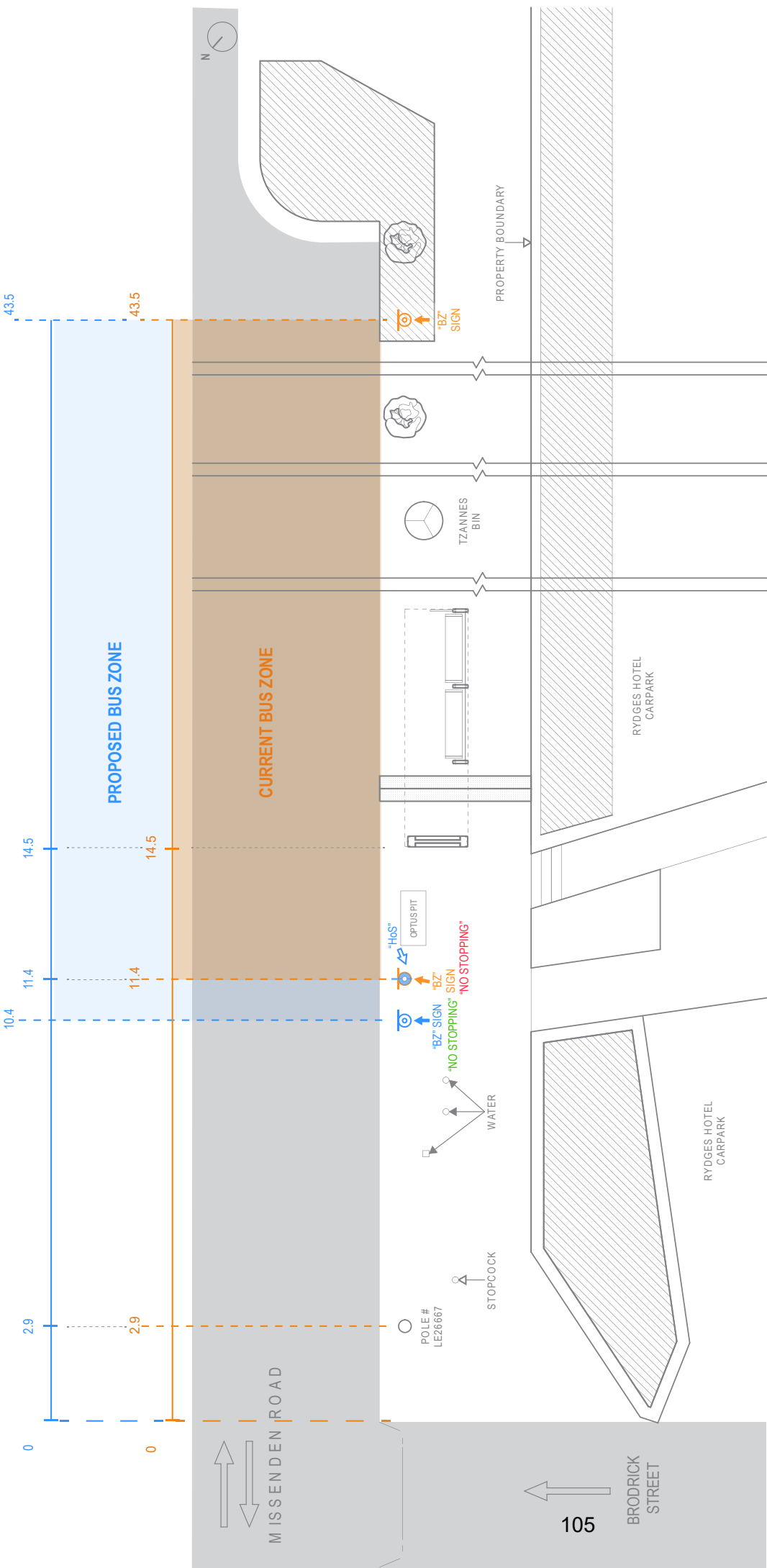
Please Note: Drawings are for illustrative purposes only and may not be to scale.



- "BZ" SIGN: Current location of Bus Zone (BZ) sign.
- "BZ" SIGN: Proposed relocation of Bus Zone (BZ) sign.
- "BZ" SIGN (TP): Current location of Bus Zone (BZ) on an existing telegraph pole.
- "BZ" SIGN (TP): Proposed relocation of Bus Zone (BZ) to an existing telegraph pole.
- "HoS": Head of Stand (HoS) in the form of a Transport for NSW B-Pole sign. Demarcates the HoS to bus operators + provides passengers with timetable information.
- "NO STOPPING" SIGN: Current location of No Stopping Zone.
- "NO STOPPING" SIGN: Proposed location of No Stopping Zone.

Location: Rothschild Avenue Before Morley Avenue, Rosebery
Transit Stop Number (TSN): 201832
Shelter Identification: B3307

Please Note: Drawings are for illustrative purposes only and may not be to scale.



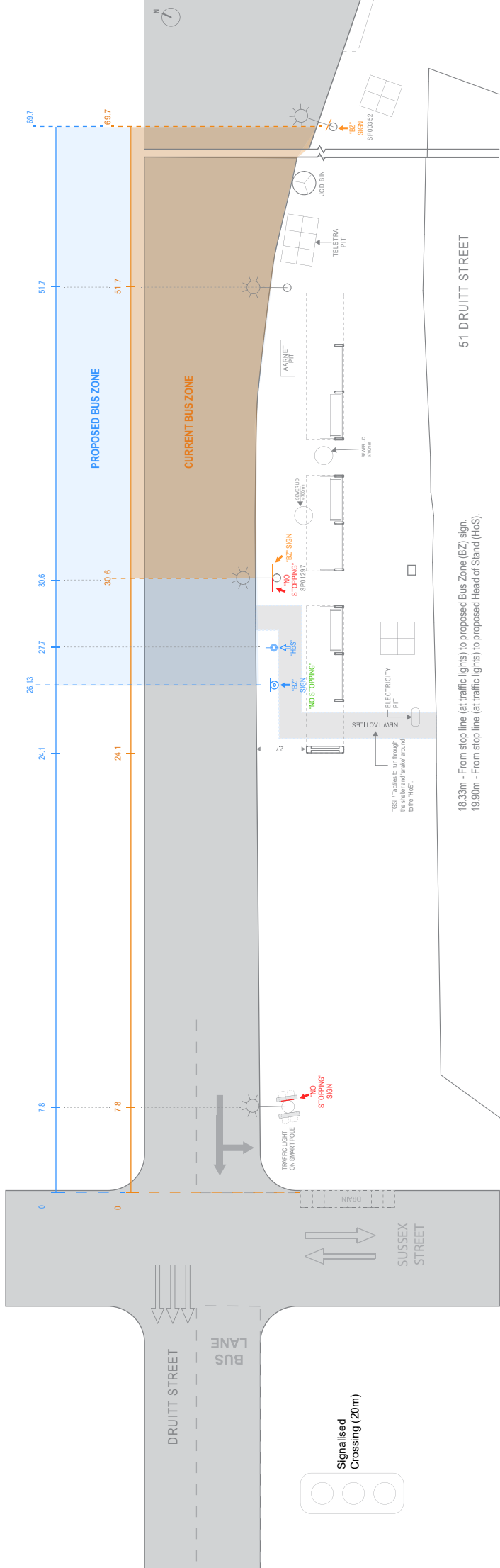
Location: MISSENDEN ROAD BEFORE GREAT WESTERN HWY, CAMPERDOWN

Transit Stop Number (TSN): 205032

Shelter Identification: B3128

Please Note: Drawings are for illustrative purposes only and may not be to scale.

- "BZ" SIGN: Current location of Bus Zone (BZ) sign.
- "BZ" SIGN: Proposed relocation of Bus Zone (BZ) sign.
- "BZ" SIGN (TP): Current location of Bus Zone (BZ) on an existing telegraph pole.
- "BZ" SIGN (TP): Proposed relocation of Bus Zone (BZ) to an existing telegraph pole.
- "HOS": Head of Stand (HoS) in the form of a Transport for NSW B-Pole sign. Demarcates the HoS to bus operators + provides passengers with timetable information.
- "NO STOPPING" SIGN: Current location of No Stopping Zone.
- "NO STOPPING" SIGN: Proposed location of No Stopping Zone.

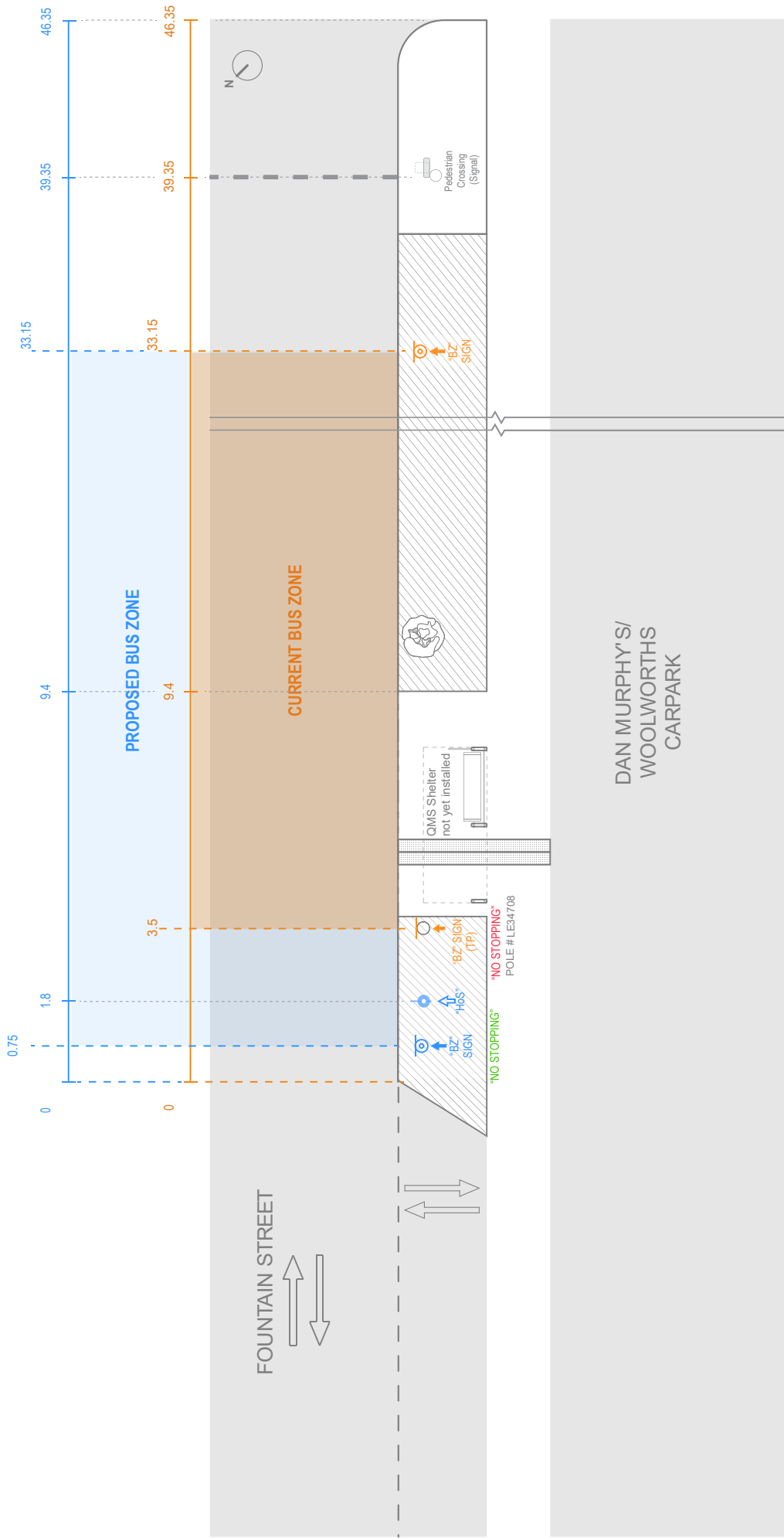


18.33m - From stop line (at traffic lights) to proposed Bus Zone (BZ) sign.
 19.90m - From stop line (at traffic lights) to proposed Head of Stand (HoS).

Location: 51 DRUITT STREET BEFORE SUSSEX STREET, SYDNEY
Transit Stop Number (TSN): 2000423
Shelter Identification: B1240

Please Note: Drawings are for illustrative purposes only and may not be to scale.

- BZ SIGN: Current location of Bus Zone (BZ) sign.
- BZ SIGN: Proposed relocation of Bus Zone (BZ) sign.
- BZ SIGN (TP): Current location of Bus Zone (BZ) on an existing telegraph pole.
- BZ SIGN (TP): Proposed relocation of Bus Zone (BZ) to an existing telegraph pole.
- HUS SIGN: Head of Stand (HoS) in the form of a Transport for NSW B-Pole sign. Demarcates the HoS to bus operators + provide passengers with timetable information.
- NO STOPPING SIGN: Current location of No Stopping Zone.
- NO STOPPING SIGN: Proposed location of No Stopping Zone.



- "BZ" SIGN: Current location of Bus Zone (BZ) sign.
- "BZ" SIGN (TP): Proposed relocation of Bus Zone (BZ) sign.
- "HOS" SIGN (TP): Current location of Bus Zone (BZ) on an existing telegraph pole.
- "NO STOPPING" SIGN (TP): Proposed relocation of Bus Zone (BZ) to an existing telegraph pole.
- "HOS": Head of Stand (HoS) in the form of a Transport for NSW B-Pole sign. Demarcates the HoS to bus operators + provides passengers with timetable information.
- "NO STOPPING" SIGN: Current location of No Stopping Zone.
- "NO STOPPING" SIGN: Proposed location of No Stopping Zone.

Location: Fountain Street after McEvoy Street, Alexandria
Transit Stop Number (TSN): 2015143
Shelter Identification: B3419

Please Note: Drawings are for illustrative purposes only and may not be to scale.