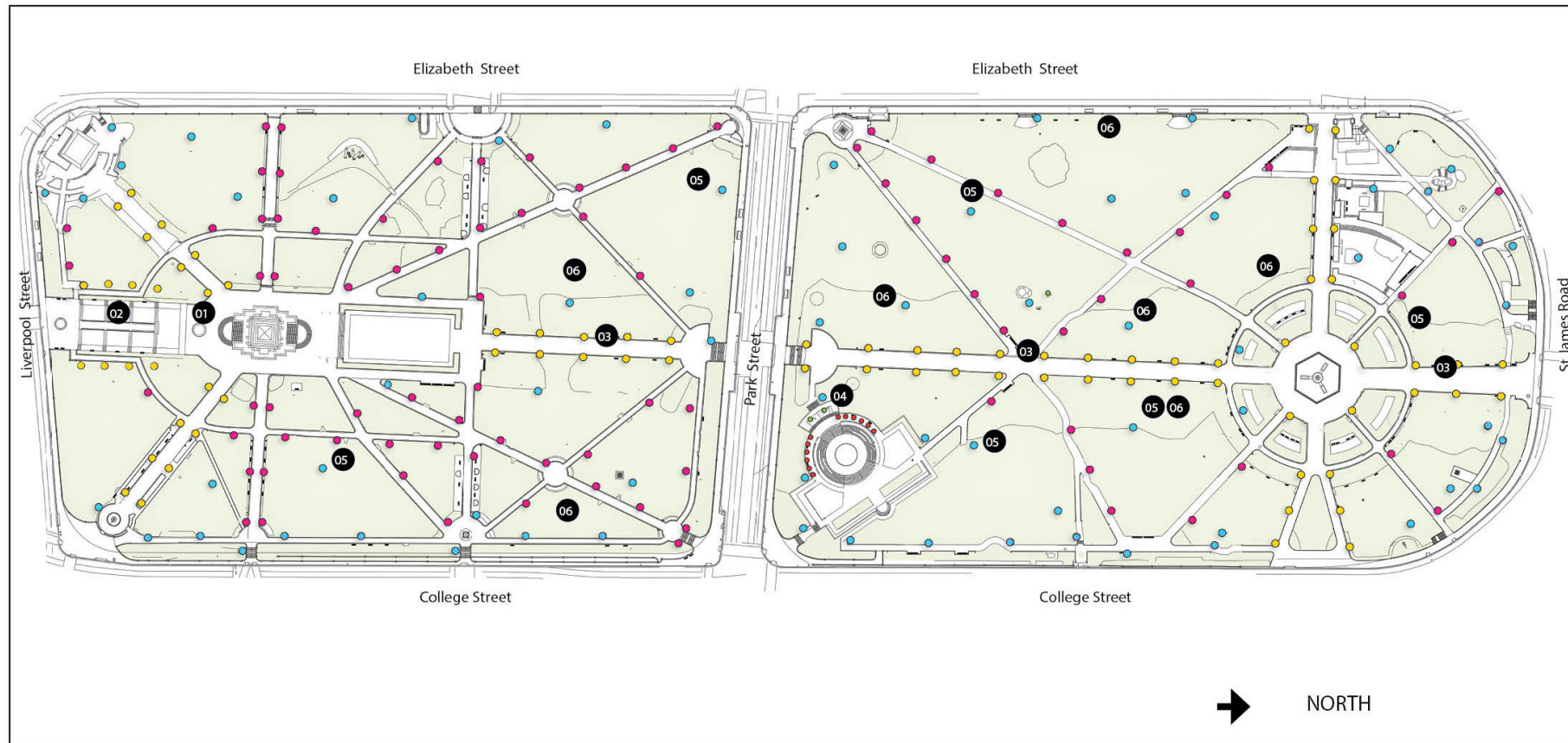


Attachment A

Hyde Park Lighting and Power Design

Proposed Works



- 01 Retain existing Anzac Memorial lighting
- 02 Upgrade lighting to cascades to match post top lights in park
- 03 Install new double sided post top lights to main Central Avenue
- 04 New lights to pergola Sandringham Gardens
- 05 New mast lights to provide light wash to lawn areas
- 06 Indicative location of new power outlets for Events

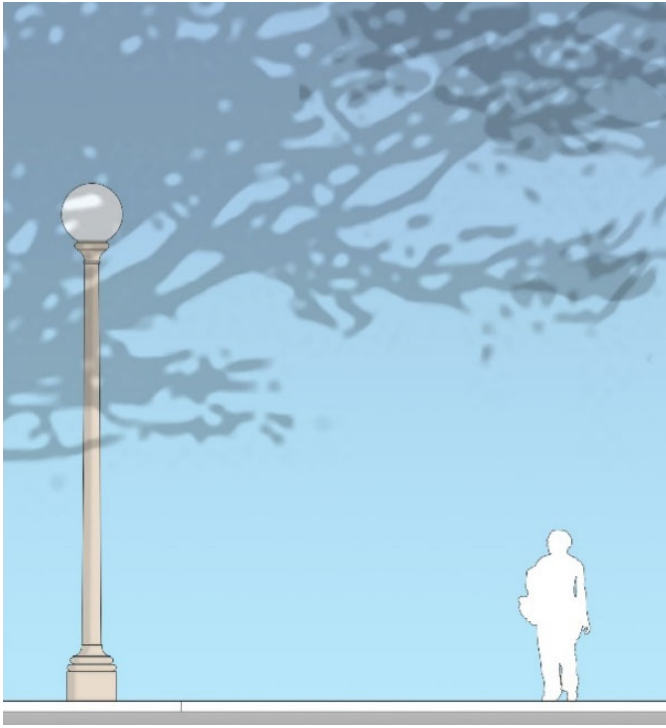


- Central Avenue Lighting
- Secondary path lighting
- Mast lighting
- Sandringham garden pergola lights

Hyde Park Lighting and power Upgrade



Hyde Park primary paths – double post top lighting arrangement



Hyde Park secondary paths – single lighting arrangement



Hyde Park lawn areas – mast lighting