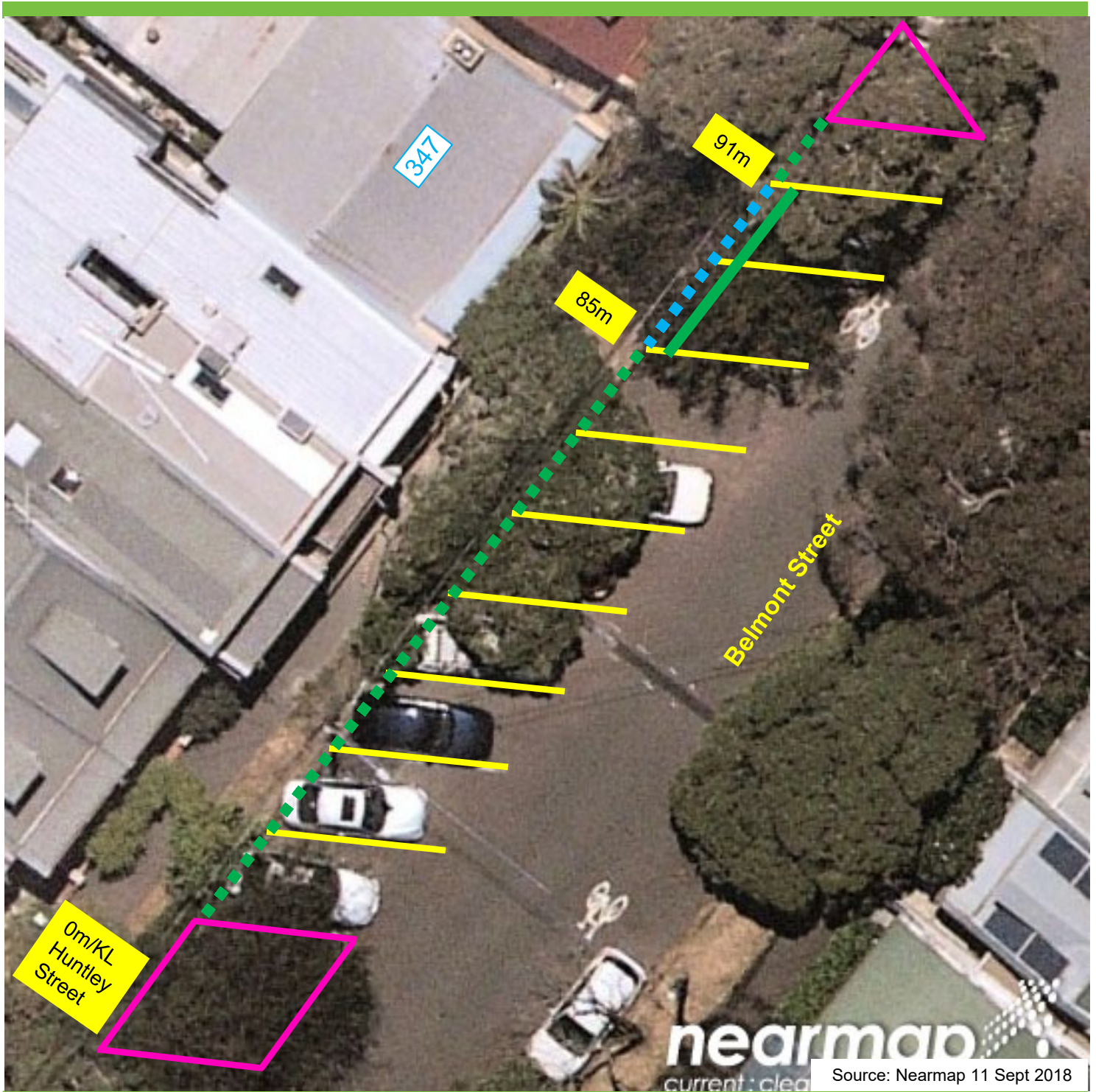


Belmont Street, Alexandria Proposed parking changes



Existing

- ■ ■ "Unrestricted for Parking" & "60° Angle Parking, Rear to Kerb, Vehicles Under 6m only"
- ■ ■ "Disability Parking Only" & "60° Angle Parking, Rear to Kerb, Vehicles Under 6m only"
- Line marking – existing line marking spaced 3.1m apart and 5.5 metres in length
- Kerb Island

Proposed

- "Unrestricted for Parking" & "60° Angle Parking, Rear to Kerb, Vehicles Under 6m only"