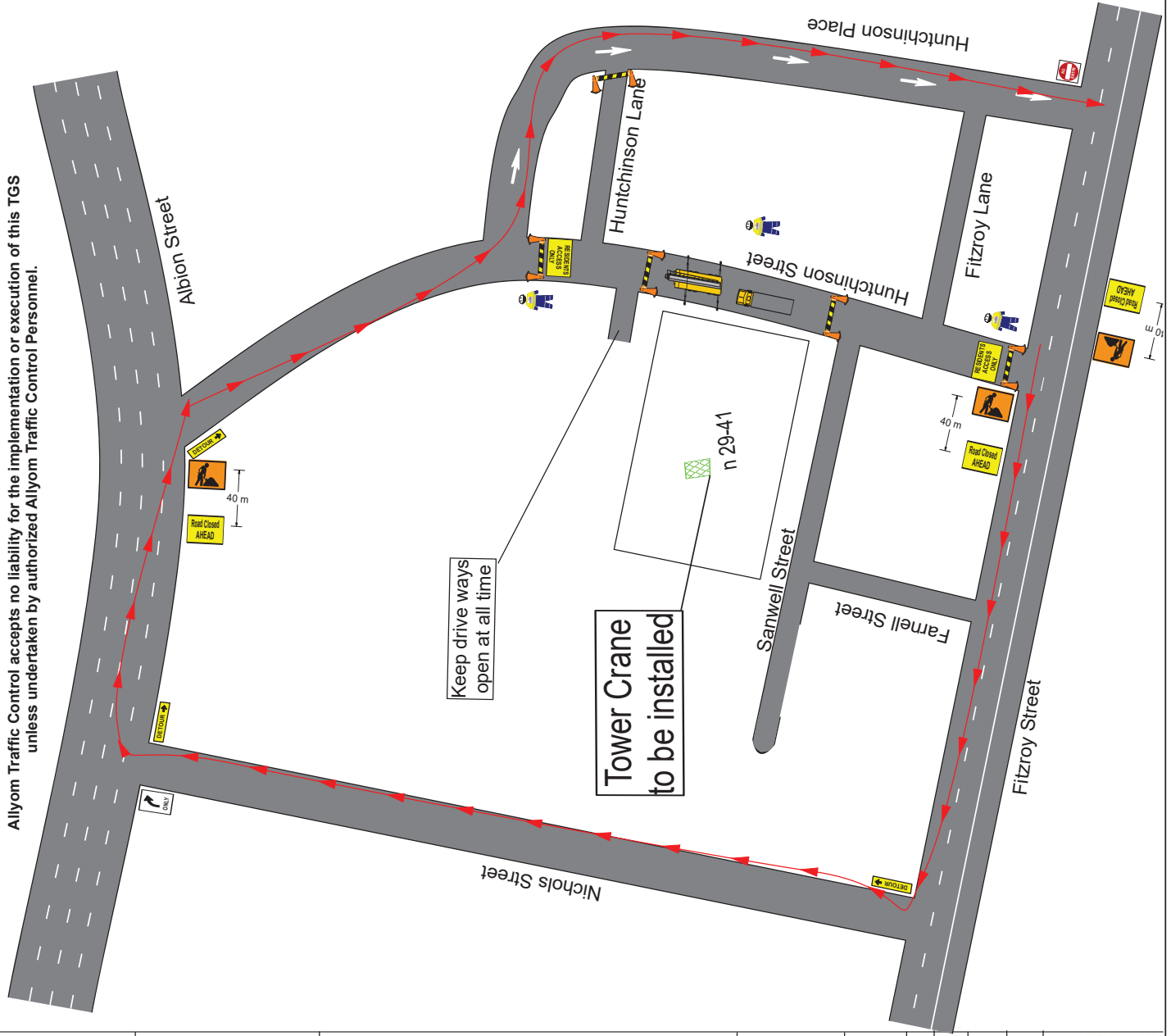


Allyom Traffic Control accepts no liability for the implementation or execution of this TGS unless undertaken by authorized Allyom Traffic Control Personnel.



Purpose/ Usage	Less 50km/h	50 - 70km/h	above 70km/h
Merge Taper	4m	9m	12m
Lateral Shift Taper	4m	12m	18m
Shoulder Closure/Parking	4m	18m	24m
Lane Closure	4m	12m	18m
Separating Opposing Traffic	4m	12m	18m

Dm (Speed Limit)	Merge Taper Length	Lateral Taper Length	Buffer Length
45 or Less	15	-	30
46 to 55	30	15	30
56 to 65	60	30	30
66 to 75	115	70	30
76 to 85	130	80	40
86 to 95	145	90	40
96 to 105	160	100	50
Greater than 105	180	110	50

- Notes:
1. Low-Medium Traffic volume
 2. Traffic access maintained by traffic controllers
 3. Traffic control devices use and implemented as part of this TGS
 4. Pedestrians access maintained around works. Safe clearances must be maintained for access from traffic flow.
 5. Work area is to be clearly defined with traffic cones, barriers or fencing
 6. TGS must be implemented by a certified and competent person.
 7. TGS must only be implemented during approved hours of road authority.
 8. The site must be inspected before TGS is implemented, during operation and pre-closedown.
 9. Duplication of signs may be required.
 10. The site must be monitored to avoid end of queue collisions.
 11. Any modifications made to this TGS must be noted in box provided.
 12. Construction vehicles shall not remain stationary in "live traffic" lanes, unrestricted site access & egress must be maintained at all times.

Traffic Guidance Scheme (onsite)
 Modified by: Signed:
 Date: Time:
 RMS Select & Modify Cert #:

Project: 29-41 Hutchinson Street, Surry Hills
TGS
 249



ALLYOM
TRAFFIC CONTROL

Date: 06/07/2023
Author: Michael Agnew
PWZTMP: TCT 1003171
Contact: Mike -0414 281 330
Client: 