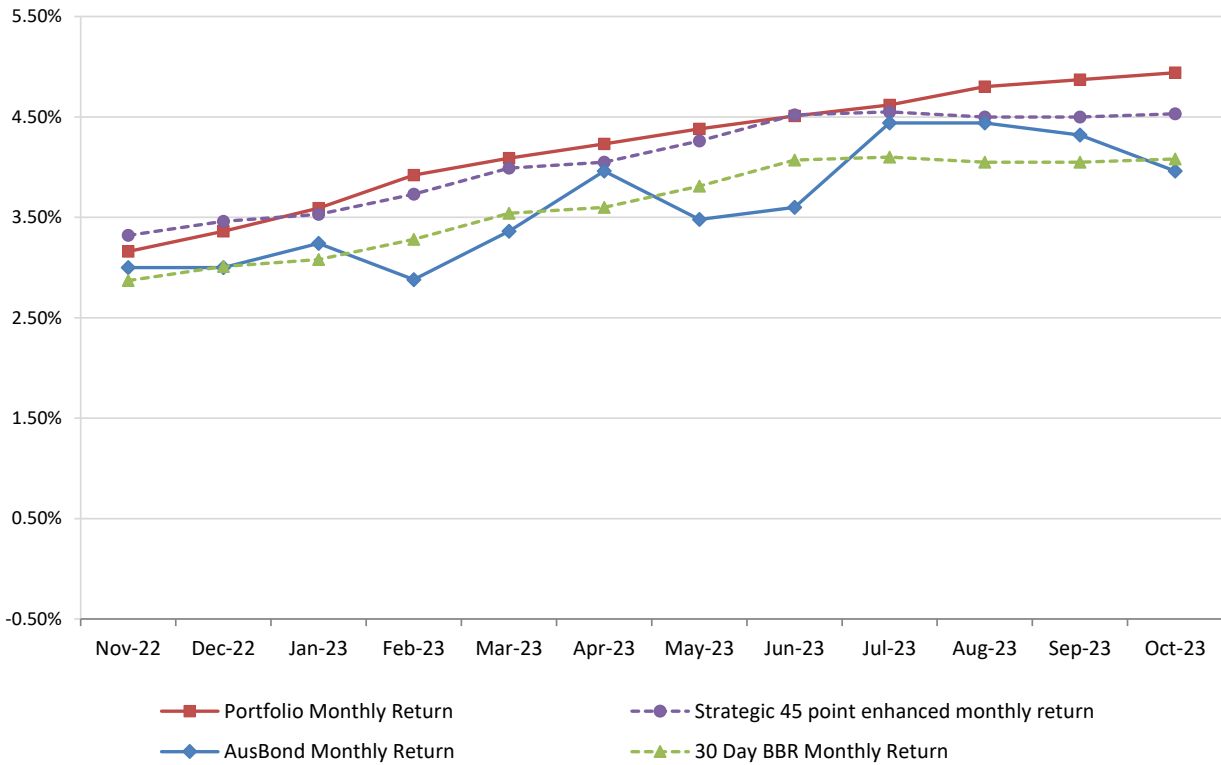


Attachment B

**Investment Performance
as at 31 October 2023**

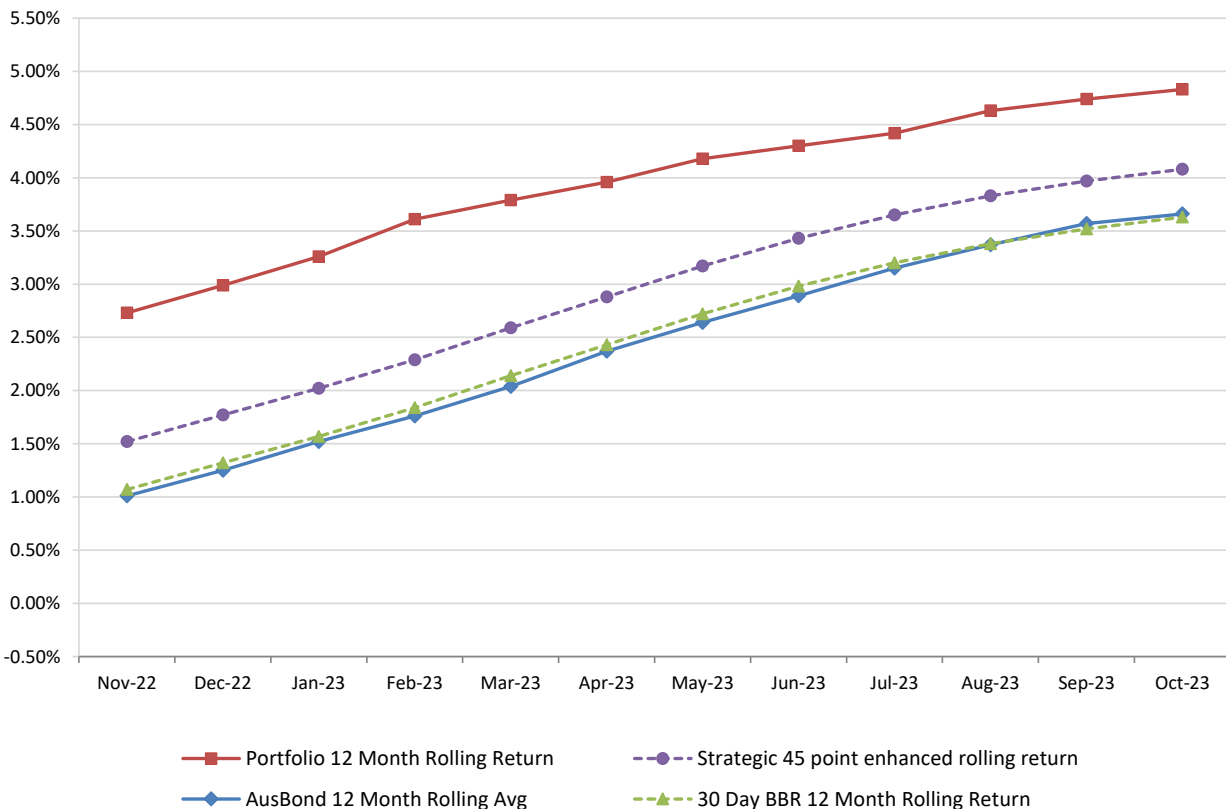
Monthly Results

Actual Portfolio vs Strategic Enhanced Benchmark vs AusBond Benchmark vs 30 Day BBR Benchmark
October 2023

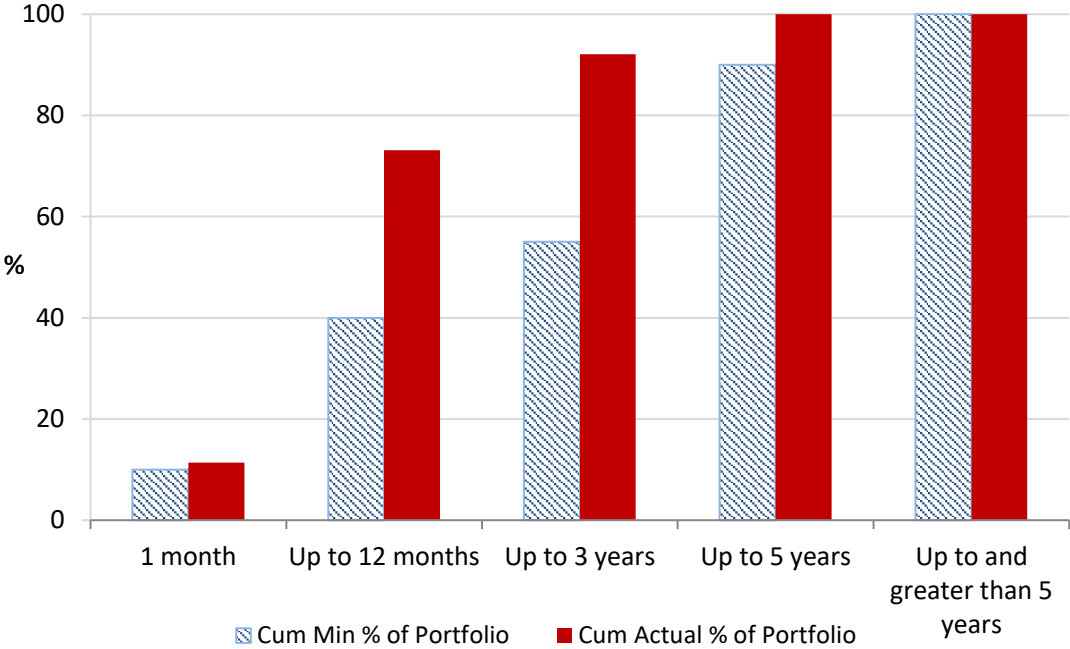


12 Month Rolling Averages

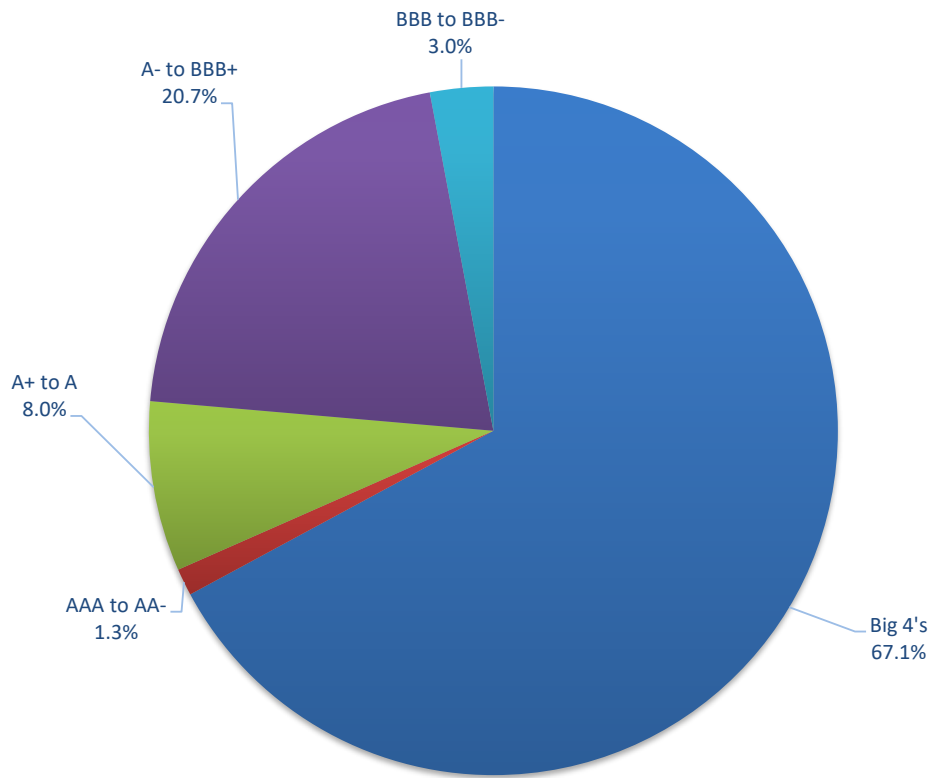
Actual Portfolio vs Strategic Enhanced Benchmark vs AusBond Benchmark vs 30 Day BBR Benchmark



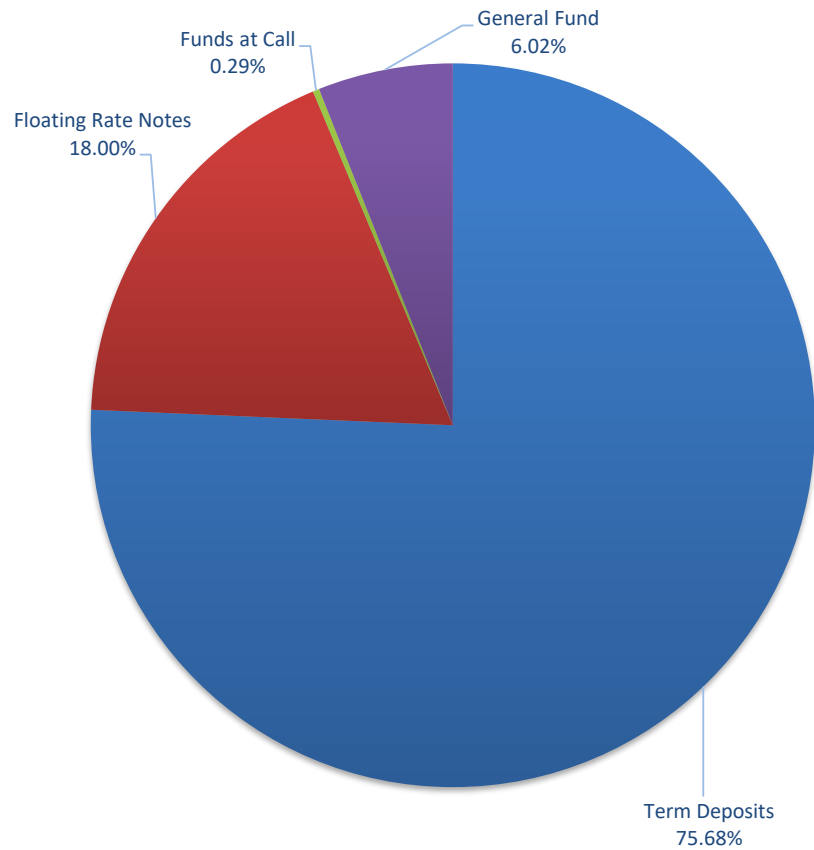
Portfolio Liquidity - Minimum Allocations as at 31 October 2023



Risk Profile as at 31 October 2023



Risk Profile as at 31 October 2023



INVESTMENT AND CASH DISTRIBUTION BY FINANCIAL INSTITUTION
as at 31 October 2023

Institution Category	Financial Institution	Amount \$M	Financial Inst. %	Institution Cat. %
Australian Big 4 Bank (and related institutions)	ANZ Bank	24.5	3.1	
	Commonwealth Bank	198.5	25.2	
	National Australia Bank	75.4	9.6	
	Westpac Banking Corporation	229.3	29.2	
Big 4 Total		527.7		67.1
Other Australian ADIs and Australian subsidiaries of foreign institutions	Bank Australia Limited	9.5	1.2	
	Bank of Queensland	23.0	2.9	
	Bendigo & Adelaide Bank	69.5	8.8	
	Great Southern Bank (formerly C	6.5	0.8	
	ING Bank	70.0	8.9	
	Suncorp Bank	48.8	6.2	
	Macquarie Bank Ltd	14.0	1.8	
	Northern Territory Treasury Corp	10.0	1.3	
Newcastle Permanent Building S	7.3	0.9		
Other ADI Total		258.5		32.9
Grand Total		786.2	100.0	100.0