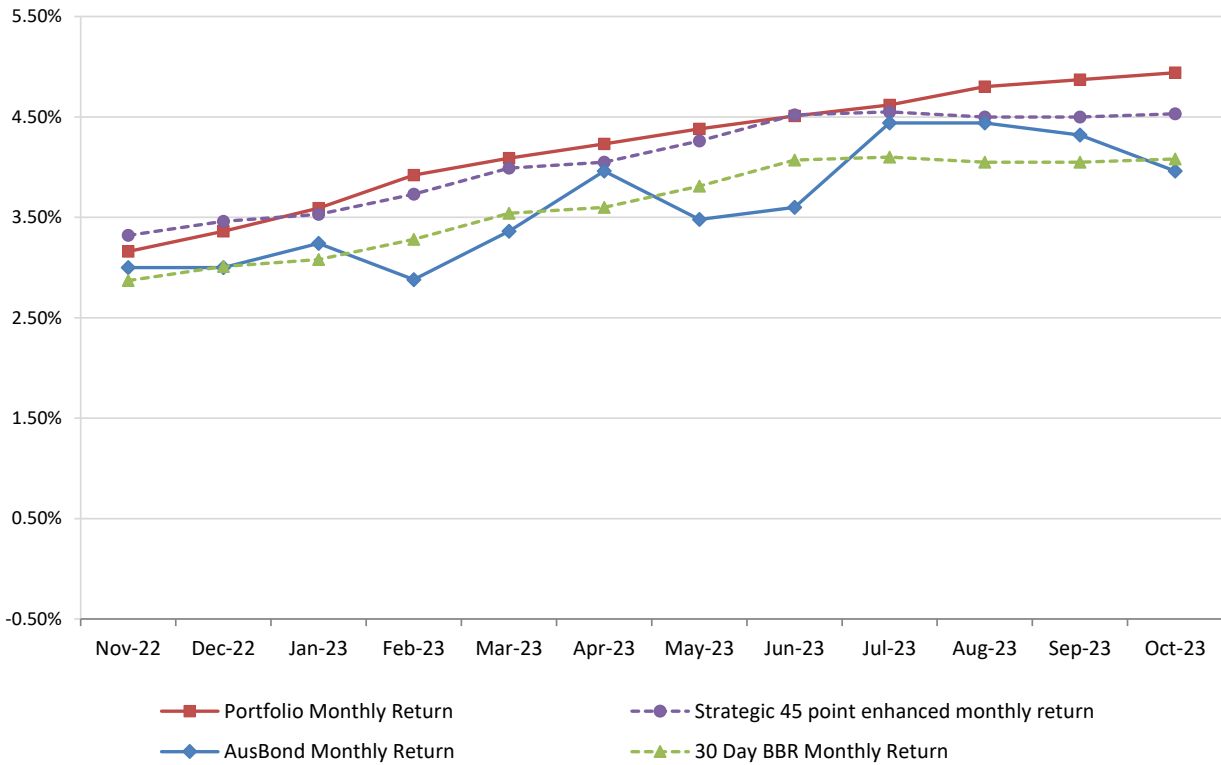


# **Attachment B**

**Investment Performance  
as at 31 October 2023**

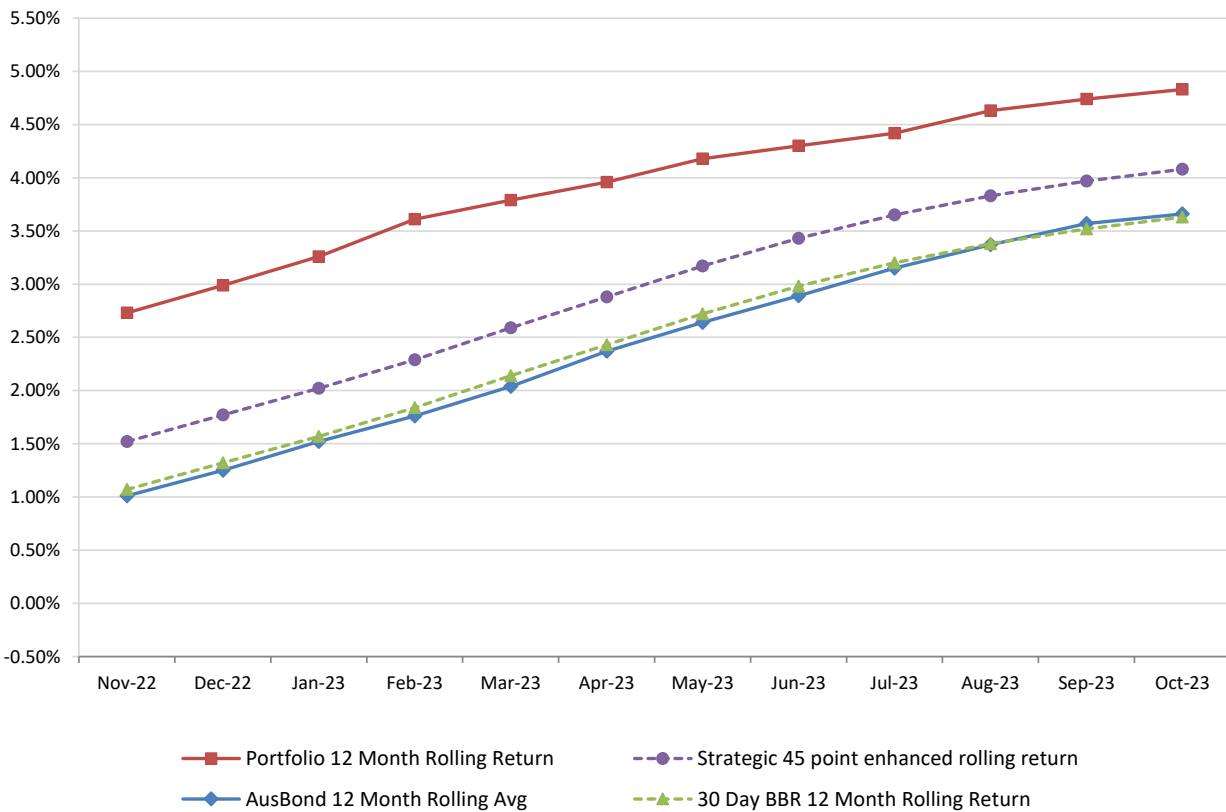
### Monthly Results

Actual Portfolio vs Strategic Enhanced Benchmark vs AusBond Benchmark vs 30 Day BBR Benchmark  
October 2023

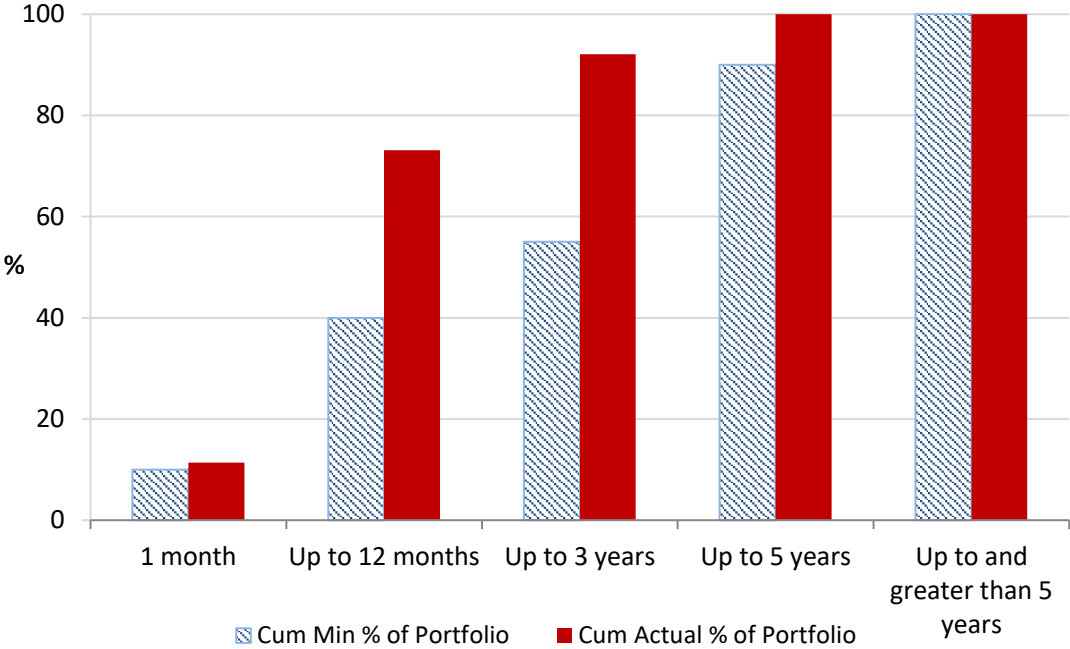


### 12 Month Rolling Averages

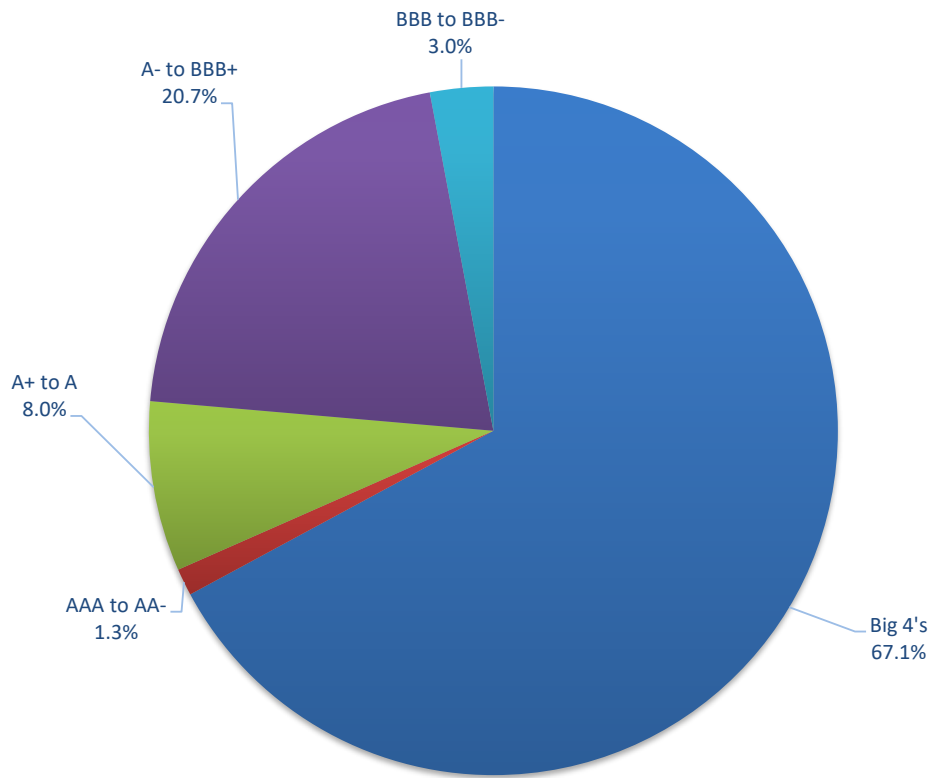
Actual Portfolio vs Strategic Enhanced Benchmark vs AusBond Benchmark vs 30 Day BBR Benchmark



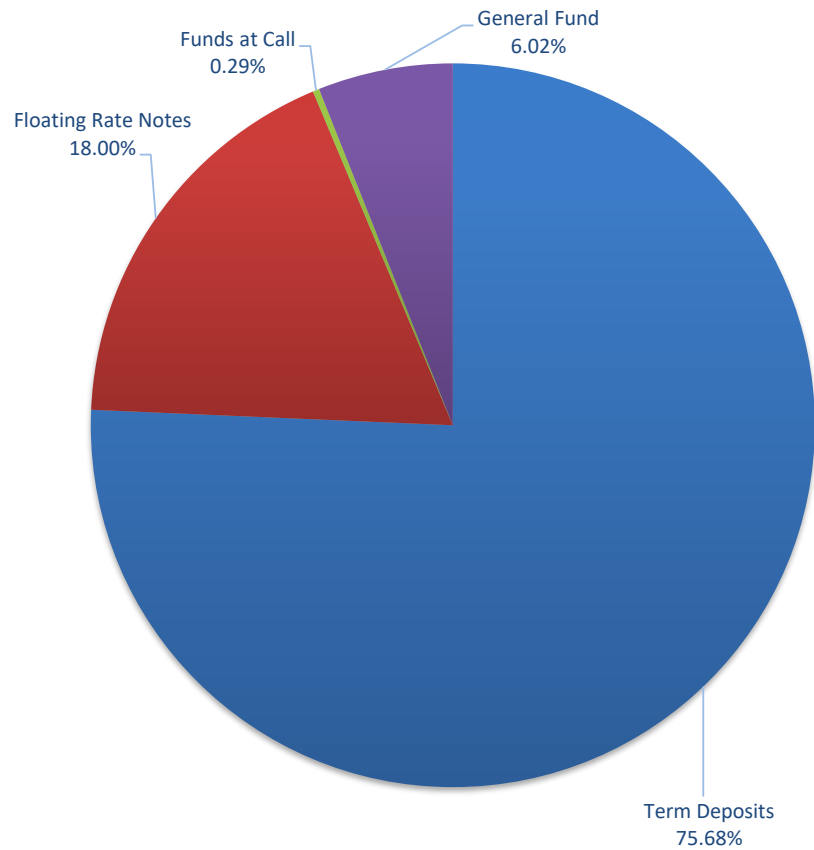
**Portfolio Liquidity - Minimum Allocations as at 31 October 2023**



### Risk Profile as at 31 October 2023



### Risk Profile as at 31 October 2023



**INVESTMENT AND CASH DISTRIBUTION BY FINANCIAL INSTITUTION**  
as at 31 October 2023

Institution Category	Financial Institution	Amount \$M	Financial Inst. %	Institution Cat. %
Australian Big 4 Bank (and related institutions)	ANZ Bank	24.5	3.1	
	Commonwealth Bank	198.5	25.2	
	National Australia Bank	75.4	9.6	
	Westpac Banking Corporation	229.3	29.2	
<b>Big 4 Total</b>		<b>527.7</b>		<b>67.1</b>
Other Australian ADIs and Australian subsidiaries of foreign institutions	Bank Australia Limited	9.5	1.2	
	Bank of Queensland	23.0	2.9	
	Bendigo & Adelaide Bank	69.5	8.8	
	Great Southern Bank (formerly C	6.5	0.8	
	ING Bank	70.0	8.9	
	Suncorp Bank	48.8	6.2	
	Macquarie Bank Ltd	14.0	1.8	
	Northern Territory Treasury Corp	10.0	1.3	
Newcastle Permanent Building S	7.3	0.9		
<b>Other ADI Total</b>		<b>258.5</b>		<b>32.9</b>
<b>Grand Total</b>		<b>786.2</b>	<b>100.0</b>	<b>100.0</b>