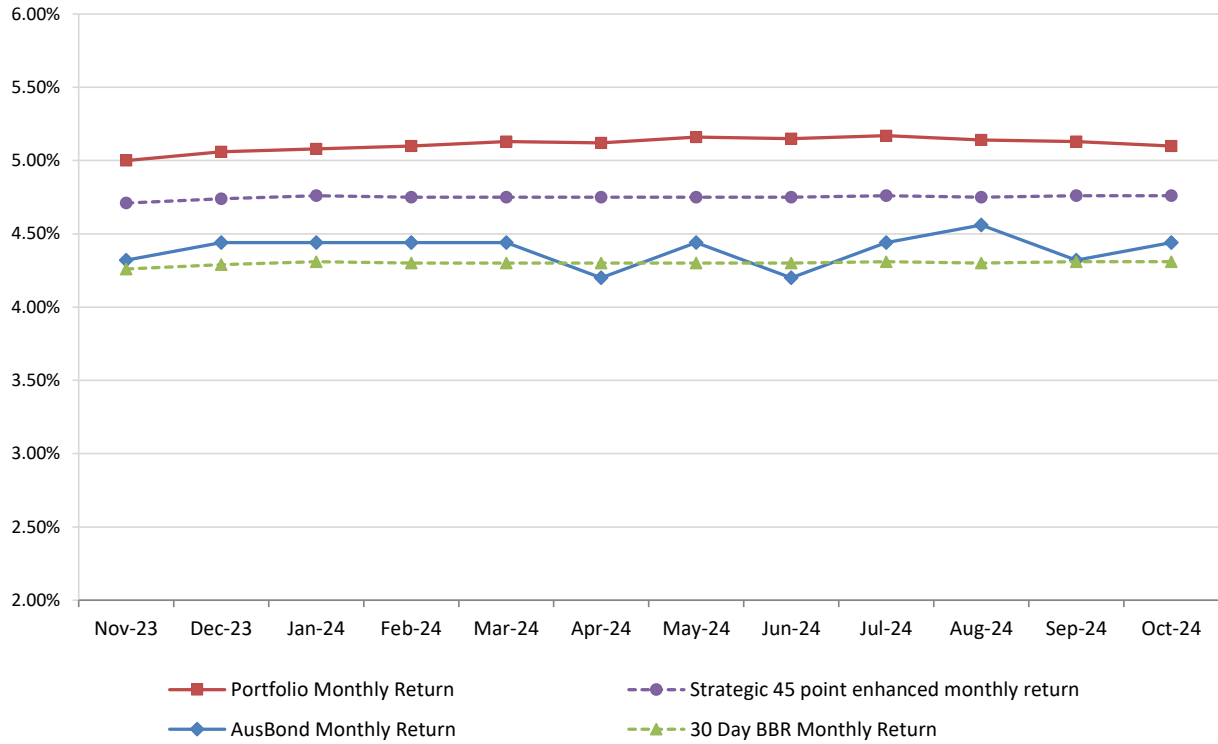


Attachment B

**Investment Performance
as at 31 October 2024**

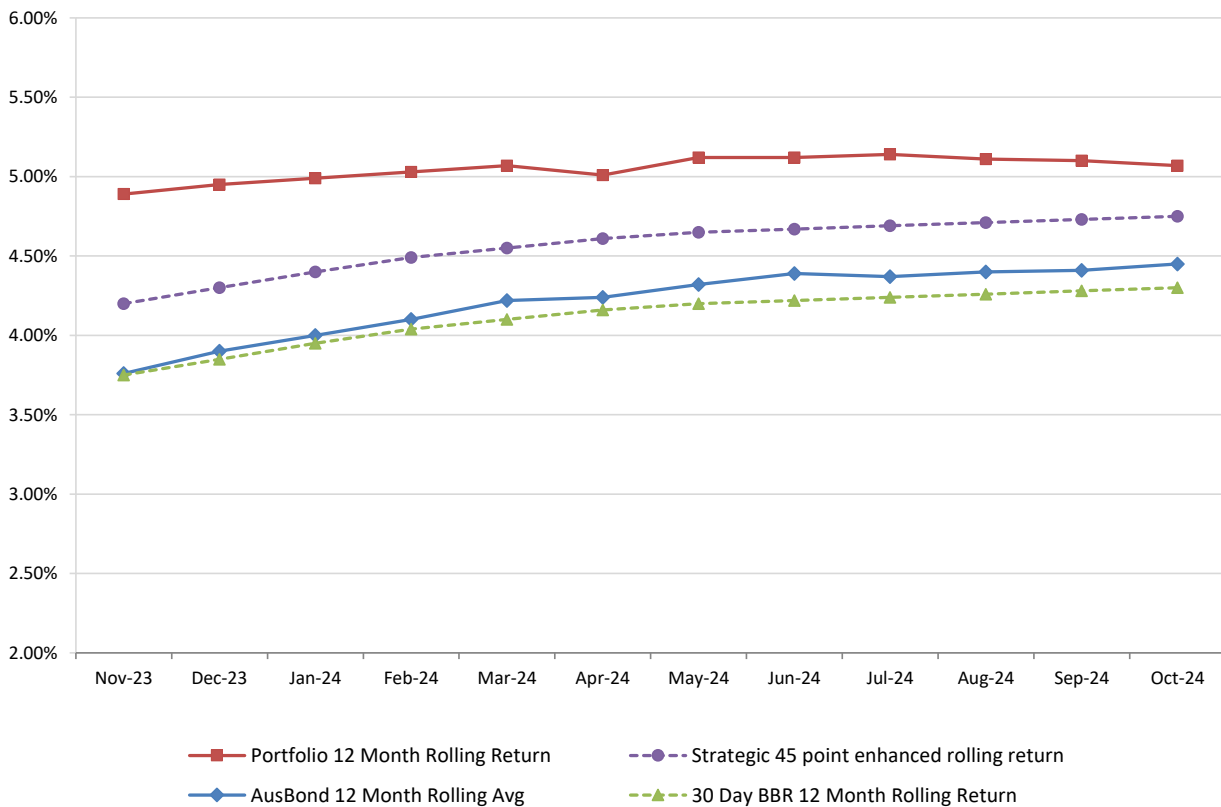
Monthly Results

Actual Portfolio vs Strategic Enhanced Benchmark vs AusBond Benchmark vs 30 Day BBR Benchmark
October 2024

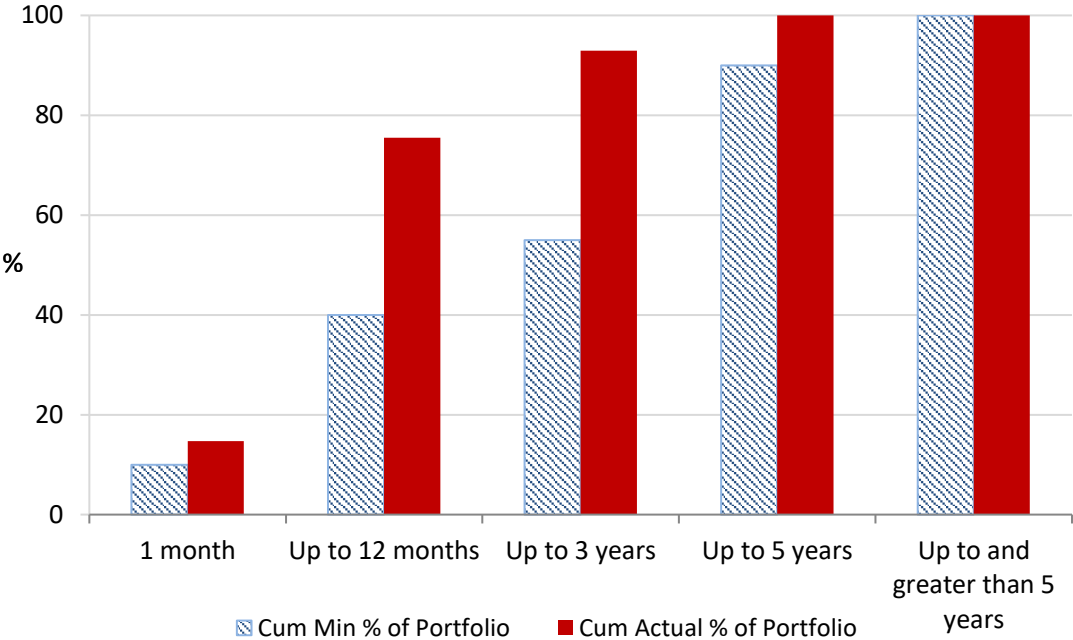


12 Month Rolling Averages

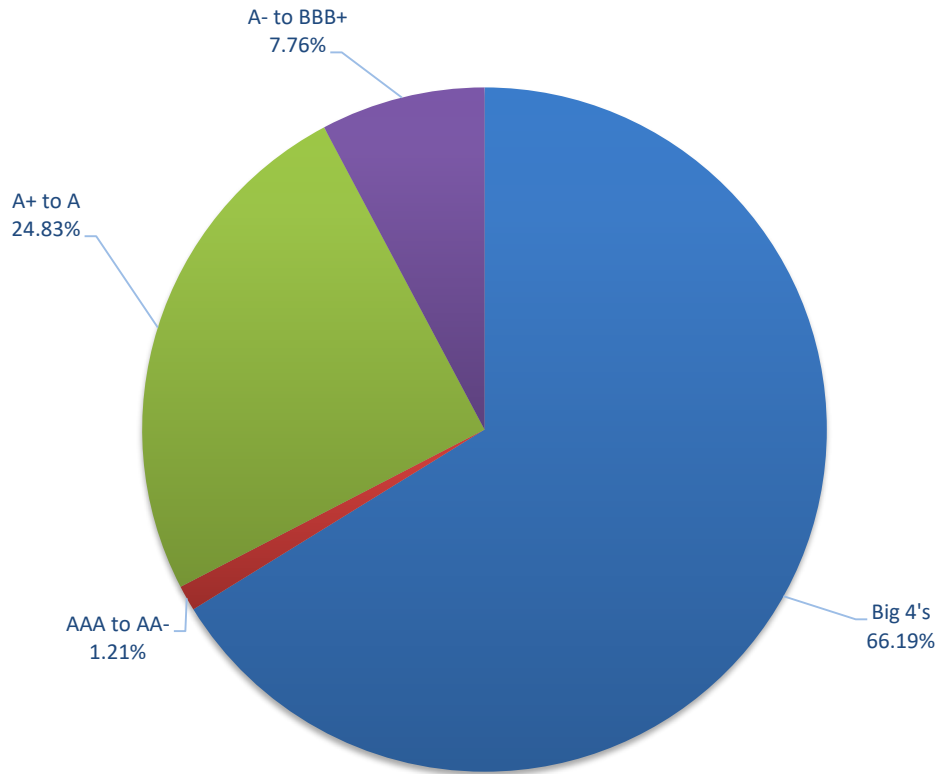
Actual Portfolio vs Strategic Enhanced Benchmark vs AusBond Benchmark vs 30 Day BBR Benchmark
October 2024



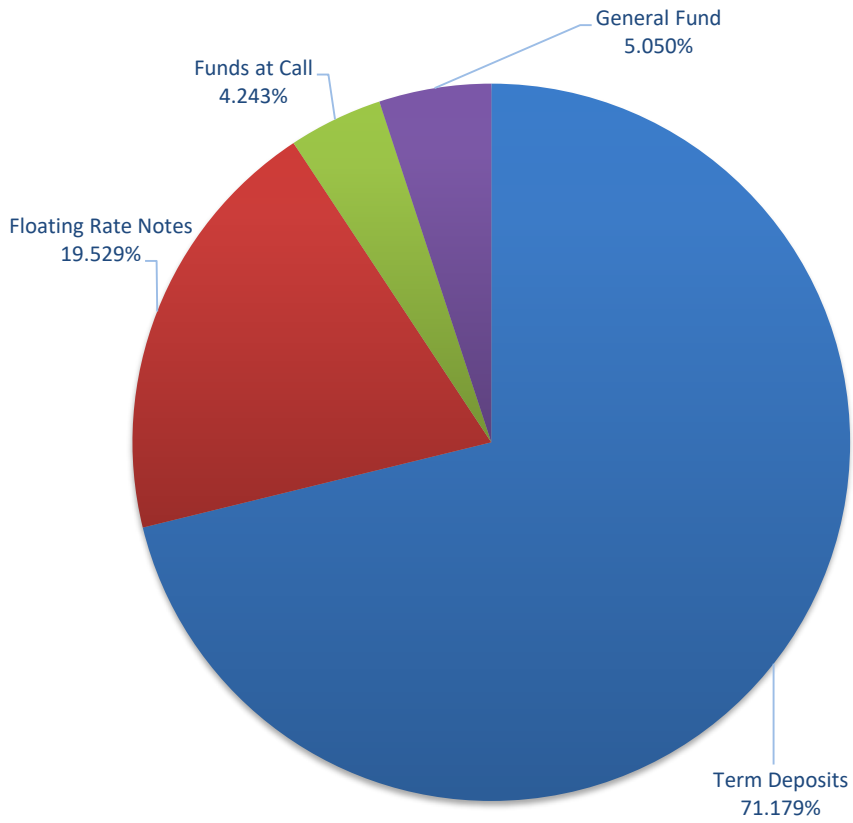
Portfolio Liquidity - Minimum Allocations as at 31 October 2024



Risk Profile as at 31 October 2024



Investments by Type as at 31 October 2024



INVESTMENT AND CASH DISTRIBUTION BY FINANCIAL INSTITUTION				
as at 31 October 2024				
Institution Category	Financial Institution	Amount \$M	Financial Inst. %	Institution Cat. %
Australian Big 4 Bank (and related institutions)	ANZ Bank	23.0	2.8	
	Commonwealth Bank	41.4	5.0	
	National Australia Bank	214.7	25.9	
	Westpac Banking Corporation	268.7	32.5	
Big 4 Total		547.7		66.193
Other Australian ADIs and Australian subsidiaries of foreign institutions	Bank Australia Limited	9.5	1.1	
	Bank of Queensland	28.0	3.4	
	Bendigo & Adelaide Bank	13.0	1.6	
	Great Southern Bank (formerly Credit Union Australia)	6.5	0.8	
	ING Bank	100.0	12.1	
	Suncorp Bank	91.5	11.1	
	Macquarie Bank Ltd	14.0	1.7	
	Northern Territory Treasury Corporation	10.0	1.2	
Newcastle Greater Mutual Group Ltd	7.3	0.9		
Other ADI Total		279.8		33.807
Grand Total		827.5	100.0	100.000